

# Anti-Human YWHAH Polyclonal Antibody

## Summary

---

<b>Catalog No.</b>	PHG03501
<b>Host species</b>	Rabbit
<b>Tested applications</b>	ELISA: 1:4000-1:8000, IHC: 1:50-1:100, WB: 1:1000-1:4000
<b>Species reactivity</b>	Human
<b>Immunogen</b>	E. coli - derived recombinant Human YWHAH (Met1-Asn246).
<b>Form</b>	Liquid
<b>Storage buffer</b>	0.01M PBS, pH 7.4, 50% Glycerol, 0.05% Proclin 300.
<b>Clonality</b>	Polyclonal
<b>Isotype</b>	IgG
<b>Applications</b>	ELISA, IHC, WB
<b>Target</b>	YWHAH, Protein AS1, YWHA1, 14-3-3 protein eta
<b>Purification</b>	Purified by antigen affinity column.
<b>Accession</b>	Q04917
<b>Stability and Storage</b>	Use a manual defrost freezer and avoid repeated freeze thaw cycles. Store at 2 to 8°C for frequent use. Store at -20 to -80°C for twelve months from the date of receipt.
<b>Note</b>	For research use only.

## Data Image

---

Various lysates were subjected to SDS PAGE followed by western blot with YWHAH antibody (PHG03501) at 1µg/ml.

Lane 1: NIH3T3 cell lysate

Lane 2: A431 cell lysate

Lane 3: Raji cell lysate

Lane 4: Hela cell lysate

Lane 5: Jurkat cell lysate

Lane 6: Mouse brain lysate

Lane 7: Mouse spleen lysate

Lane 8: Mouse kidney lysate

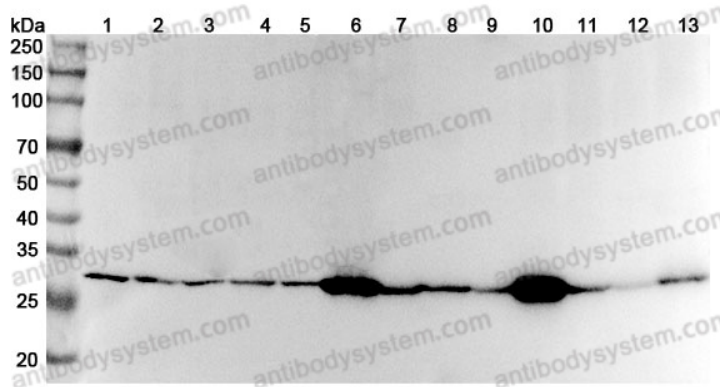
Lane 9: Mouse heart lysate

Lane 10: Rat brain lysate

Lane 11: Rat spleen lysate

Lane 12: Rat kidney lysate

Lane 13: Rat heart lysate



WESTERN BLOT

Second Ab: Goat Anti-Rabbit IgG H&L Polyclonal antibody, HRP (PTB96431) at 0.1 µg/mL.

Predict MW: 28 kDa

Observed MW: 28 kDa

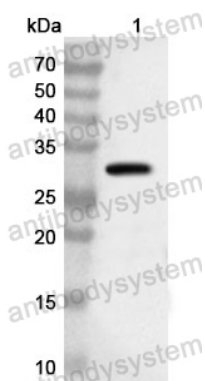
Recombinant Protein lysates were subjected to SDS PAGE followed by western blot with YWHAH antibody (PHG03501) at 1 µg/ml.

Lane 1: Recombinant Protein

Second Ab: Goat Anti-Rabbit IgG H&L Polyclonal antibody, HRP (PTB96431) at 0.1 µg/mL.

Predict MW: 30 kDa

Observed MW: 30 kDa



Western Blot