

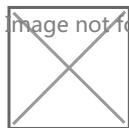
Anti-Human MAGOH Polyclonal Antibody

Summary

Catalog No.	PHF42501
Host species	Rabbit
Tested applications	ELISA: 1:4000-1:8000, IHC: 1:50-1:100, WB: 1:1000-1:4000
Species reactivity	Human
Immunogen	E. coli - derived recombinant Human MAGOH (Met1-Ile146).
Form	Liquid
Storage buffer	0.01M PBS, pH 7.4, 50% Glycerol, 0.05% Proclin 300.
Clonality	Polyclonal
Isotype	IgG
Applications	ELISA, IHC, WB
Target	MAGOH, Protein mago nashi homolog, MAGOHA
Purification	Purified by antigen affinity column.
Accession	P61326
Stability and Storage	Use a manual defrost freezer and avoid repeated freeze thaw cycles. Store at 2 to 8°C for frequent use. Store at -20 to -80°C for twelve months from the date of receipt.
Note	For research use only.

Data Image

Image not found or type unknown



WESTERN BLOT

Various lysates were subjected to SDS PAGE followed by western blot with MAGOH antibody (PHF42501) at 1 μ g/ml.

Lane 1: Hela cell lysate

Lane 2: HL60 cell lysate

Lane 3: K562 cell lysate

Lane 4: Raji cell lysate

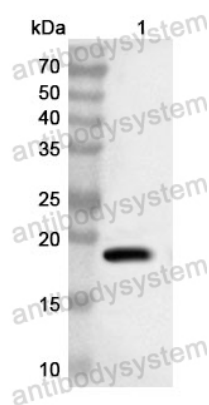
Lane 5: Jurkat cell lysate

Lane 6: Lncap cell lysate

Second Ab: Goat Anti-Rabbit IgG H&L Polyclonal antibody, HRP (PTB96431) at 0.1 μ g/mL.

Predict MW: 17 kDa

Observed MW: 17 kDa



Western Blot

Recombinant Protein lysates were subjected to SDS PAGE followed by western blot with MAGOH antibody (PHF42501) at 1 μ g/ml.

Lane 1: Recombinant Protein

Second Ab: Goat Anti-Rabbit IgG H&L Polyclonal antibody, HRP (PTB96431) at 0.1 μ g/mL.

Predict MW: 19 kDa

Observed MW: 19 kDa