

Research Grade Lucatumumab

Summary

Catalog No.	DHD68905
Alternative Names	CHIR-12, 12, HCD122, CAS: 903512-50-5
Clone ID	Lucatumumab
Host species	Human
Species reactivity	Human
Form	Liquid
Storage buffer	0.01M PBS, pH 7.4.
Concentration	1 mg/ml
Purity	>95% as determined by SDS-PAGE.
Clonality	Monoclonal
Isotype	IgG1-kappa
Applications	Research Grade Biosimilar
Target	Tumor necrosis factor receptor superfamily member 5, B-cell surface antigen CD40, Bp50, CD40L receptor, TNFRSF5, CDw40, CD40
Purification	Protein A/G purified from cell culture supernatant.
Endotoxin level	Please contact with the lab for this information.
Expression system	Mammalian Cells
Accession	P25942

Stability and Storage

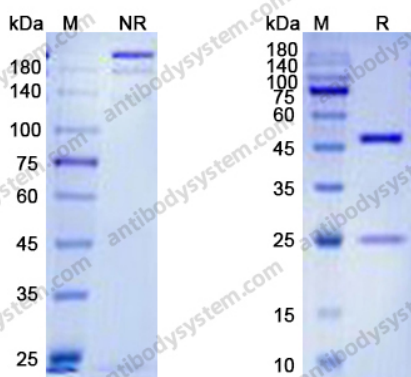
Use a manual defrost freezer and avoid repeated freeze-thaw cycles.

Store at 4°C short term (1-2 weeks). Store at -20°C 12 months. Store at -80°C long term.

Note

For research use only. Not suitable for clinical or therapeutic use.

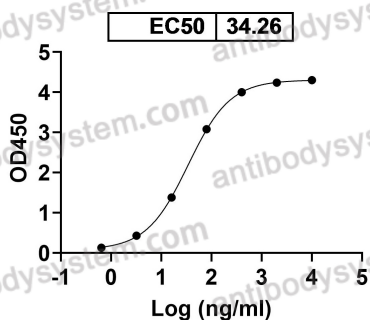
Data Image



SDS PAGE for Lucatumumab

SDS-PAGE

Lucatumumab binds with CD40



Bioactivity

Detects CD40/TNFRSF5 in indirect ELISAs.