

# Anti-MMP15 Polyclonal Antibody

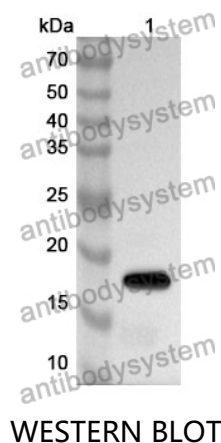
## Summary

---

<b>Catalog No.</b>	PHE82201
<b>Host species</b>	Rabbit
<b>Tested applications</b>	ELISA: 1:4000-1:8000, IHC: 1:50-1:100, WB: 1:1000-1:4000
<b>Species reactivity</b>	Human, Mouse, Rat
<b>Immunogen</b>	E. coli - derived recombinant Human MMP15 (His410-Leu553).
<b>Form</b>	Liquid
<b>Storage buffer</b>	0.01M PBS, pH 7.4, 50% Glycerol, 0.05% Proclin 300.
<b>Clonality</b>	Polyclonal
<b>Isotype</b>	IgG
<b>Applications</b>	ELISA, IHC, WB
<b>Target</b>	MT2MMP,MT2-MMP,MMP15,SMCP-2,MTMMP2,MT-MMP 2,Membrane-type matrix metalloproteinase 2,MMP-15,Membrane-type-2 matrix metalloproteinase,Matrix metalloproteinase-15
<b>Purification</b>	Purified by antigen affinity column.
<b>Accession</b>	P51511
<b>Stability and Storage</b>	Use a manual defrost freezer and avoid repeated freeze thaw cycles. Store at 2 to 8°C for frequent use. Store at -20 to -80°C for twelve months from the date of receipt.
<b>Note</b>	For research use only.

## Data Image

---



Recombinant Protein lysates were subjected to SDS PAGE followed by western blot with MMP15 antibody (PHE82201) at 1 µg/ml.

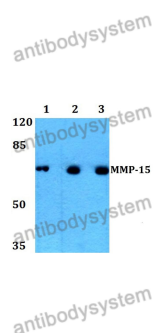
Lane 1: Recombinant protein

Second Ab: Goat Anti-Rabbit IgG H&L Polyclonal antibody, HRP (PTB96431) at 0.1 µg/mL.

Predict MW: 19 kDa

Observed MW: 19 kDa

Various lysates were subjected to SDS PAGE followed by western blot with MMP15 antibody (PHE82201) at 1 µg/ml.



Lane 1: A549

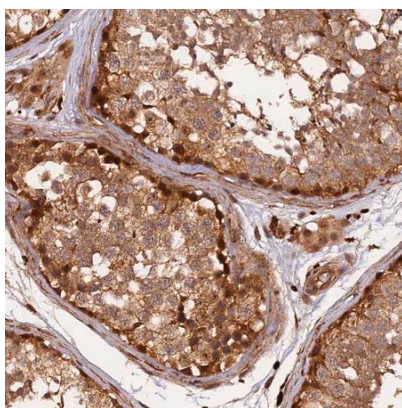
Lane 2: sp2/0

Lane 3: H9C2

Second Ab: Goat Anti-Rabbit IgG H&L Polyclonal antibody, HRP (PTB96431) at 0.1 µg/mL.

Predict MW: 75 kDa

Observed MW: 75 kDa



Immunohistochemical

Immunohistochemical analysis of human testis stained for MMP15 with PHE82201.