

Anti-HSP90AA1 Polyclonal Antibody

Summary

Catalog No.	PHC28101
Host species	Rabbit
Tested applications	ELISA: 1:4000-1:8000, IHC: 1:50-1:100, WB: 1:1000-1:4000
Species reactivity	Human, Mouse, Rat
Immunogen	E. coli - derived recombinant Human HSP90AA1 (Ser39-Asp193).
Form	Liquid
Storage buffer	0.01M PBS, pH 7.4, 50% Glycerol, 0.05% Proclin 300.
Clonality	Polyclonal
Isotype	IgG
Applications	ELISA, IHC, WB
Target	LPS-associated protein 2, Heat shock protein HSP 90-alpha, HSPCA, HSP90A, HSP 86, Lipopolysaccharide-associated protein 2, HSP86, HSP90AA1, Heat shock 86 kDa, Renal carcinoma antigen NY-REN-38, LAP-2, HSPC1
Purification	Purified by antigen affinity column.
Accession	P07900
Stability and Storage	Use a manual defrost freezer and avoid repeated freeze thaw cycles. Store at 2 to 8°C for frequent use. Store at -20 to -80°C for twelve months from the date of receipt.
Note	For research use only.

Data Image

Various lysates were subjected to SDS PAGE followed by western blot with HSP90AA1 antibody (PHC28101) at 1 μ g/ml.

Lane 1: NIH3T3 cell lysate

Lane 2: PC-12 cell lysate

Lane 3: Hela cell lysate

Lane 4: MCF-7 cell lysate

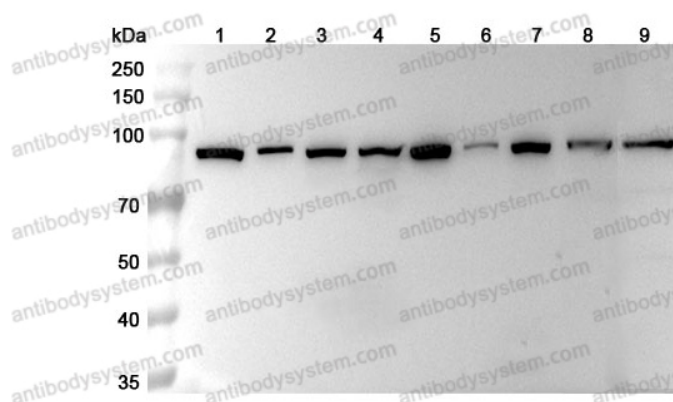
Lane 5: Jurkat cell lysate

Lane 6: Lncap cell lysate

Lane 7: Raji cell lysate

Lane 8: Mouse brain lysate

Lane 9: Rat brain lysate



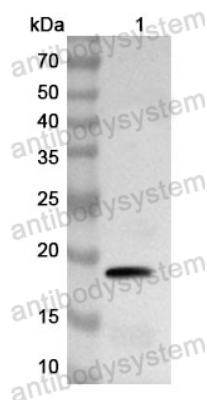
Western Blot

Second Ab: Goat Anti-Rabbit IgG H&L

Polyclonal antibody, HRP (PTB96431) at 0.1 μ g/mL.

Predict MW: 85 kDa

Observed MW: 90 kDa



Western Blot

Recombinant Protein lysates were subjected to SDS PAGE followed by western blot with HSP90AA1 antibody (PHC28101) at 1 μ g/ml.

Lane 1: Recombinant Protein

Second Ab: Goat Anti-Rabbit IgG H&L
Polyclonal antibody, HRP (PTB96431) at 0.1 μ g/mL.

Predict MW: 19 kDa

Observed MW: 19 kDa