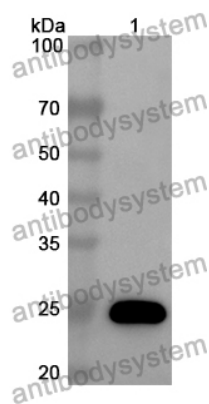


Anti-SLC34A2/NaPi2b Polyclonal Antibody

Summary

Catalog No.	PHB65401
Host species	Rabbit
Tested applications	ELISA: 1:4000-1:8000, IHC: 1:50-1:200, WB: 1:500-1:4000
Species reactivity	Human, Rat
Immunogen	E. coli - derived recombinant Human SLC34A2/NaPi2b (Ser251-Asp361).
Form	Liquid
Storage buffer	0.01M PBS, pH 7.4, 50% Glycerol, 0.05% Proclin 300.
Concentration	0.45 mg/ml
Clonality	Polyclonal
Isotype	IgG
Applications	ELISA, IHC, WB
Target	Sodium/phosphate cotransporter 2B, Na(+)-dependent phosphate cotransporter 2B, Na(+)/Pi cotransporter 2B, Sodium-dependent phosphate transport protein 2B, NaPi3b, NaPi-2b, SLC34A2, Solute carrier family 34 member 2, Sodium-phosphate transport protein 2B
Purification	Purified by antigen affinity column.
Accession	O95436
Stability and Storage	Use a manual defrost freezer and avoid repeated freeze thaw cycles. Store at 2 to 8°C for frequent use. Store at -20 to -80°C for twelve months from the date of receipt.
Note	For research use only.

Data Image



Western Blot

Recombinant Protein lysates were subjected to SDS PAGE followed by western blot with SLC34A2/NaPi2b antibody (PHB65401) at 1 μ g/ml.

Lane 1: Recombinant protein

Second Ab: Goat Anti-Rabbit IgG H&L Polyclonal antibody, HRP (PTB96431) at 0.1 μ g/mL.

Predict MW: 25 kDa

Observed MW: 25 kDa