

Anti-Human GPX5 Polyclonal Antibody

Summary

Catalog No.	PHB29401
Host species	Rabbit
Tested applications	ELISA: 1:4000-1:8000, IHC: 1:50-1:100, WB: 1:1000-1:4000
Species reactivity	Human
Immunogen	E. coli - derived recombinant Human GPX5 (Met28-Lys221).
Form	Liquid
Storage buffer	0.01M PBS, pH 7.4, 50% Glycerol, 0.05% Proclin 300.
Clonality	Polyclonal
Isotype	IgG
Applications	ELISA, IHC, WB
Target	GSHPx-5, GPX5, Epididymal secretory glutathione peroxidase, EGLP, GPx-5, Glutathione peroxidase 5, Epididymis-specific glutathione peroxidase-like protein
Purification	Purified by antigen affinity column.
Accession	O75715
Stability and Storage	Use a manual defrost freezer and avoid repeated freeze thaw cycles. Store at 2 to 8°C for frequent use. Store at -20 to -80°C for twelve months from the date of receipt.
Note	For research use only.

Data Image

Various lysates were subjected to SDS PAGE followed by western blot with GPX5 antibody (PHB29401) at 1 μ g/ml.

Lane 1: Mouse liver lysate

Second Ab: Goat Anti-Rabbit IgG H&L Polyclonal antibody, HRP (PTB96431) at 0.1 μ g/mL.

Predict MW: 25 kDa

Observed MW: 28 kDa

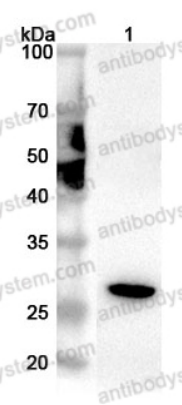
Recombinant Protein lysates were subjected to SDS PAGE followed by western blot with GPX5 antibody (PHB29401) at 1 μ g/ml.

Lane 1: Recombinant Protein

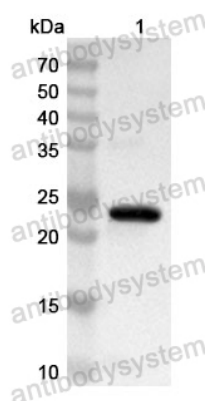
Second Ab: Goat Anti-Rabbit IgG H&L Polyclonal antibody, HRP (PTB96431) at 0.1 μ g/mL.

Predict MW: 24 kDa

Observed MW: 24 kDa



Western Blot



Western Blot