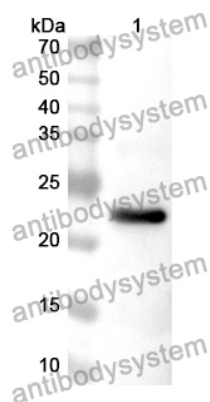


Anti-CYP26A1 Polyclonal Antibody

Summary

Catalog No.	PHA59501
Host species	Rabbit
Tested applications	ELISA: 1:4000-1:8000, IHC: 1:50-1:100, WB: 1:1000-1:4000
Species reactivity	Human, Mouse, Rat
Immunogen	E. coli - derived recombinant Human CYP26A1 (Arg73-Ile255).
Form	Liquid
Storage buffer	0.01M PBS, pH 7.4, 50% Glycerol, 0.05% Proclin 300.
Clonality	Polyclonal
Isotype	IgG
Applications	ELISA, IHC, WB
Target	P450RAI1, Cytochrome P450 26A1, Cytochrome P450RAI, hP450RAI, CYP26A1, Cytochrome P450 retinoic acid-inactivating 1, Retinoic acid-metabolizing cytochrome, CYP26, Retinoic acid 4-hydroxylase
Purification	Purified by antigen affinity column.
Accession	O43174
Stability and Storage	Use a manual defrost freezer and avoid repeated freeze thaw cycles. Store at 2 to 8°C for frequent use. Store at -20 to -80°C for twelve months from the date of receipt.
Note	For research use only.

Data Image



Western Blot

Recombinant Protein lysates were subjected to SDS PAGE followed by western blot with CYP26A1 antibody (PHA59501) at 1 μ g/ml.

Lane 1: Recombinant protein

Second Ab: Goat Anti-Rabbit IgG H&L Polyclonal antibody, HRP (PTB96431) at 0.1 μ g/mL.

Predict MW: 23 kDa

Observed MW: 23 kDa