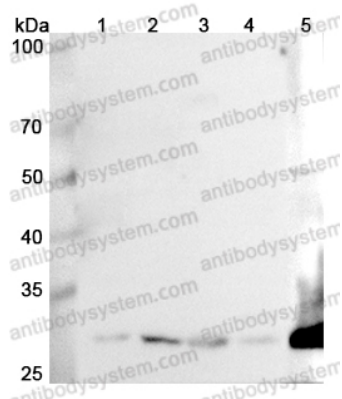


Anti-GCLM Polyclonal Antibody

Summary

Catalog No.	PHE58301
Host species	Rabbit
Tested applications	ELISA: 1:4000-1:8000, IHC: 1:50-1:100, WB: 1:1000-1:4000
Species reactivity	Human, Mouse, Rat
Immunogen	E. coli - derived recombinant Human GCLM (Ser40-Ser251).
Form	Liquid
Storage buffer	0.01M PBS, pH 7.4, 50% Glycerol, 0.05% Proclin 300.
Clonality	Polyclonal
Isotype	IgG
Applications	ELISA, IHC, WB
Target	Glutamate--cysteine ligase modifier subunit,Gamma-ECS regulatory subunit,Gamma-glutamylcysteine synthetase regulatory subunit,Glutamate--cysteine ligase regulatory subunit,GCLM,GCS light chain,GLCLR
Purification	Purified by antigen affinity column.
Accession	P48507
Stability and Storage	Use a manual defrost freezer and avoid repeated freeze thaw cycles. Store at 2 to 8°C for frequent use. Store at -20 to -80°C for twelve months from the date of receipt.
Note	For research use only.

Data Image



Western Blot

Various lysates were subjected to SDS PAGE followed by western blot with GCLM antibody (PHE58301) at 1 μ g/ml.

Lane 1: K562 cell lysate

Lane 2: NICH460 cell lysate

Lane 3: Mouse liver lysate

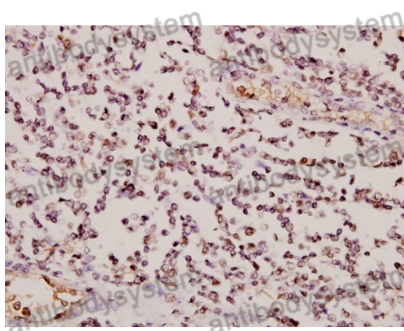
Lane 4: Mouse spleen lysate

Lane 5: Rat kidney lysate

Second Ab: Goat Anti-Rabbit IgG H&L Polyclonal antibody, HRP (PTB96431) at 0.1 μ g/mL.

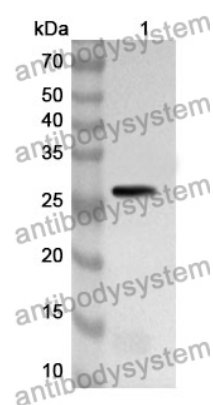
Predict MW: 31 kDa

Observed MW: 31 kDa



Immunohistochemical

Immunohistochemical analysis of human tonsil cancer tissue stained for GCLM with PHE58301.



Western Blot

Recombinant Protein lysates were subjected to SDS PAGE followed by western blot with GCLM antibody (PHE58301) at 1 μ g/ml.

Lane 1: Recombinant Protein

Second Ab: Goat Anti-Rabbit IgG H&L Polyclonal antibody, HRP (PTB96431) at 0.1 μ g/mL.

Predict MW: 26 kDa

Observed MW: 26 kDa