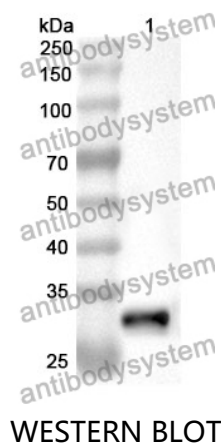


Anti-IREB2 Polyclonal Antibody

Summary

Catalog No.	PHE56501
Host species	Rabbit
Tested applications	ELISA: 1:4000-1:8000, IHC: 1:50-1:100, WB: 1:1000-1:4000
Species reactivity	Human, Mouse, Rat
Immunogen	E. coli - derived recombinant Human IREB2 (Pro39-Ser281).
Form	Liquid
Storage buffer	0.01M PBS, pH 7.4, 50% Glycerol, 0.05% Proclin 300.
Clonality	Polyclonal
Isotype	IgG
Applications	ELISA, IHC, WB
Target	IRP2,Iron-responsive element-binding protein 2,IREB2,IRE-BP 2,Iron regulatory protein 2
Purification	Purified by antigen affinity column.
Accession	P48200
Stability and Storage	Use a manual defrost freezer and avoid repeated freeze thaw cycles. Store at 2 to 8°C for frequent use. Store at -20 to -80°C for twelve months from the date of receipt.
Note	For research use only.

Data Image



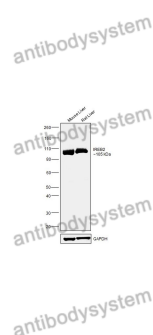
Recombinant Protein lysates were subjected to SDS PAGE followed by western blot with IREB2 antibody (PHE56501) at 1 µg/ml.

Lane 1: Recombinant protein

Second Ab: Goat Anti-Rabbit IgG H&L Polyclonal antibody, HRP (PTB96431) at 0.1 µg/mL.

Predict MW: 29 kDa

Observed MW: 29 kDa



Various lysates were subjected to SDS PAGE followed by western blot with IREB2 antibody (PHE56501) at 1 µg/ml.

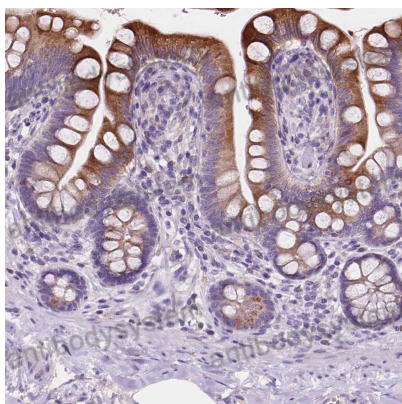
Lane 1: Mouse liver

Lane 2: Rat liver

Second Ab: Goat Anti-Rabbit IgG H&L Polyclonal antibody, HRP (PTB96431) at 0.1 µg/mL.

Predict MW: 105 kDa

Observed MW: 105 kDa



Immunohistochemical

Immunohistochemical analysis of human intestine stained for IREB2 with PHE56501.