

# Anti-CSN1S1 Polyclonal Antibody

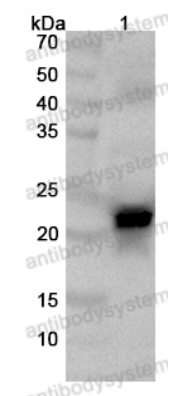
## Summary

---

<b>Catalog No.</b>	PHE50801
<b>Host species</b>	Rabbit
<b>Tested applications</b>	ELISA: 1:4000-1:8000, IHC: 1:50-1:100, WB: 1:1000-1:4000
<b>Species reactivity</b>	Human
<b>Immunogen</b>	E. coli - derived recombinant Human CSN1S1 (Arg16-Trp185).
<b>Form</b>	Liquid
<b>Storage buffer</b>	0.01M PBS, pH 7.4, 50% Glycerol, 0.05% Proclin 300.
<b>Clonality</b>	Polyclonal
<b>Isotype</b>	IgG
<b>Applications</b>	ELISA, IHC, WB
<b>Target</b>	CSN1,CSN1S1,Alpha-S1-casein,CASA
<b>Purification</b>	Purified by antigen affinity column.
<b>Accession</b>	P47710
<b>Stability and Storage</b>	Use a manual defrost freezer and avoid repeated freeze thaw cycles. Store at 2 to 8°C for frequent use. Store at -20 to -80°C for twelve months from the date of receipt.
<b>Note</b>	For research use only.

## Data Image

---



Western Blot

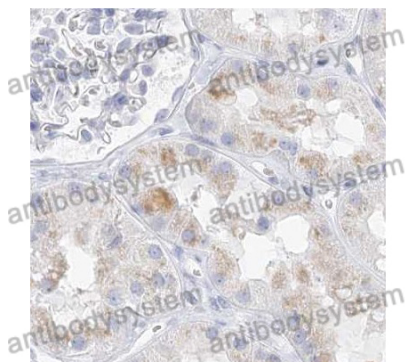
Various lysates were subjected to SDS PAGE followed by western blot with CSN1S1 antibody (PHE50801) at 1 µg/ml.

Lane 1: Human milk lysate

Second Ab: Goat Anti-Rabbit IgG H&L Polyclonal antibody, HRP (PTB96431) at 0.1 µg/mL.

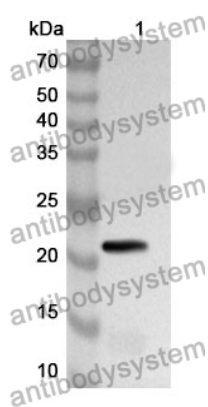
Predict MW: 21 kDa

Observed MW: 21 kDa



Immunohistochemical

Immunohistochemical analysis of human kidney stained for CSN1S1 with PHE50801.



Western Blot

Recombinant Protein lysates were subjected to SDS PAGE followed by western blot with CSN1S1 antibody (PHE50801) at 1 µg/ml.

Lane 1: Recombinant Protein

Second Ab: Goat Anti-Rabbit IgG H&L Polyclonal antibody, HRP (PTB96431) at 0.1 µg/mL.

Predict MW: 22 kDa

Observed MW: 22 kDa