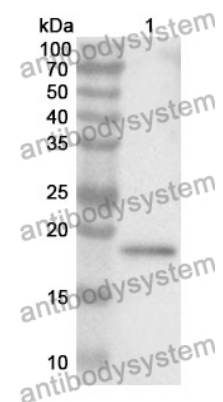


Anti-Ki67/MKI67 Polyclonal Antibody

Summary

Catalog No.	PHE46101
Host species	Rabbit
Tested applications	ELISA: 1:4000-1:8000, IHC: 1:50-1:100, WB: 1:2000-1:8000
Species reactivity	Human
Immunogen	E. coli - derived recombinant Human Ki67/MKI67 (Gly3088-Lys3235).
Form	Liquid
Storage buffer	0.01M PBS, pH 7.4, 50% Glycerol, 0.05% Proclin 300.
Clonality	Polyclonal
Isotype	IgG
Applications	ELISA, IHC, WB
Target	MKI67,Proliferation marker protein Ki-67,Antigen Ki67,Antigen KI-67,Antigen identified by monoclonal antibody Ki-67
Purification	Purified by antigen affinity column.
Accession	P46013
Stability and Storage	Use a manual defrost freezer and avoid repeated freeze thaw cycles. Store at 2 to 8°C for frequent use. Store at -20 to -80°C for twelve months from the date of receipt.
Note	For research use only.

Data Image



WESTERN BLOT

Recombinant Protein lysates were subjected to SDS PAGE followed by western blot with Ki67/MKI67 antibody (PHE46101) at 1 μ g/ml.

Lane 1: Recombinant protein

Second Ab: Goat Anti-Rabbit IgG H&L Polyclonal antibody, HRP (PTB96431) at 0.1 μ g/mL.

Predict MW: 19 kDa

Observed MW: 19 kDa