

# Anti-PSMC4 Polyclonal Antibody

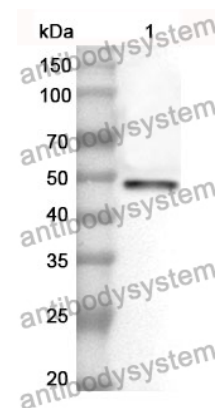
## Summary

---

|                              |  |
|------------------------------|--|
| <b>Catalog No.</b>           | PHE44401   |
| <b>Host species</b>          | Rabbit   |
| <b>Tested applications</b>   | ELISA: 1:4000-1:8000, IHC: 1:50-1:100, WB: 1:1000-1:4000   |
| <b>Species reactivity</b>    | Human, Mouse, Rat  |
| <b>Immunogen</b>             | E. coli - derived recombinant Human PSMC4 (Met1-Lys418).   |
| <b>Form</b>                  | Liquid   |
| <b>Storage buffer</b>        | 0.01M PBS, pH 7.4, 50% Glycerol, 0.05% Proclin 300.  |
| <b>Clonality</b>             | Polyclonal   |
| <b>Isotype</b>               | IgG  |
| <b>Applications</b>          | ELISA, IHC, WB   |
| <b>Target</b>                | PSMC4,MB67-interacting protein,TBP7,TBP-7,Tat-binding protein 7,MIP224,26S proteasome regulatory subunit 6B,26S proteasome AAA-ATPase subunit RPT3,Proteasome 26S subunit ATPase 4 |
| <b>Purification</b>          | Purified by antigen affinity column.   |
| <b>Accession</b>             | P43686   |
| <b>Stability and Storage</b> | Use a manual defrost freezer and avoid repeated freeze thaw cycles. Store at 2 to 8°C for frequent use. Store at -20 to -80°C for twelve months from the date of receipt.          |
| <b>Note</b>                  | For research use only.   |

## Data Image

---



WESTERN BLOT

Recombinant Protein lysates were subjected to SDS PAGE followed by western blot with PSMC4 antibody (PHE44401) at 1  $\mu\text{g/ml}$ .

Lane 1: Recombinant protein

Second Ab: Goat Anti-Rabbit IgG H&L Polyclonal antibody, HRP (PTB96431) at 0.1  $\mu\text{g/mL}$ .

Predict MW: 50 kDa

Observed MW: 50 kDa