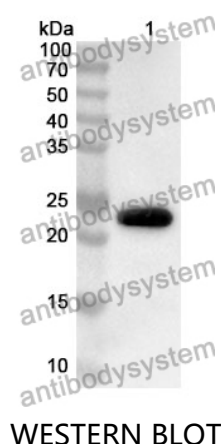


Anti-AFM Polyclonal Antibody

Summary

| | |
|------------------------------|---|
| Catalog No. | PHE44101 |
| Host species | Rabbit |
| Tested applications | ELISA: 1:4000-1:8000, IHC: 1:50-1:100, WB: 1:1000-1:4000 |
| Species reactivity | Human |
| Immunogen | E. coli - derived recombinant Human AFM (Leu22-Thr210). |
| Form | Liquid |
| Storage buffer | 0.01M PBS, pH 7.4, 50% Glycerol, 0.05% Proclin 300. |
| Clonality | Polyclonal |
| Isotype | IgG |
| Applications | ELISA, IHC, WB |
| Target | ALB2,Alpha-Alb,AFM,Alpha-albumin,ALBA,Afamin |
| Purification | Purified by antigen affinity column. |
| Accession | P43652 |
| Stability and Storage | Use a manual defrost freezer and avoid repeated freeze thaw cycles. Store at 2 to 8°C for frequent use. Store at -20 to -80°C for twelve months from the date of receipt. |
| Note | For research use only. |

Data Image



Recombinant Protein lysates were subjected to SDS PAGE followed by western blot with AFM antibody (PHE44101) at 1 µg/ml.

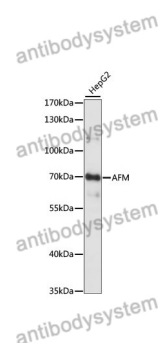
Lane 1: Recombinant protein

Second Ab: Goat Anti-Rabbit IgG H&L Polyclonal antibody, HRP (PTB96431) at 0.1 µg/mL.

Predict MW: 24 kDa

Observed MW: 24 kDa

Various lysates were subjected to SDS PAGE followed by western blot with AFM antibody (PHE44101) at 1 µg/ml.

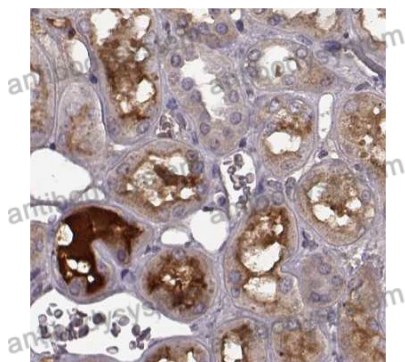


Lane 1: HepG2

Second Ab: Goat Anti-Rabbit IgG H&L Polyclonal antibody, HRP (PTB96431) at 0.1 µg/mL.

Predict MW: 69 kDa

Observed MW: 69 kDa



Immunohistochemical

Immunohistochemical analysis of human kidney stained for AFM with PHE44101.