

# Anti-ECE1 Polyclonal Antibody

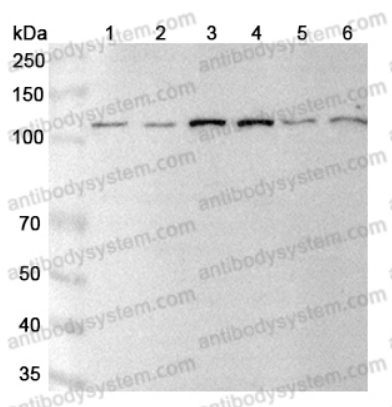
## Summary

---

<b>Catalog No.</b>	PHE38401
<b>Host species</b>	Rabbit
<b>Tested applications</b>	ELISA: 1:4000-1:8000, IHC: 1:50-1:100, WB: 1:1000-1:4000
<b>Species reactivity</b>	Human, Mouse, Rat
<b>Immunogen</b>	E. coli - derived recombinant Human ECE1 (Leu469-Glu721).
<b>Form</b>	Liquid
<b>Storage buffer</b>	0.01M PBS, pH 7.4, 50% Glycerol, 0.05% Proclin 300.
<b>Clonality</b>	Polyclonal
<b>Isotype</b>	IgG
<b>Applications</b>	ELISA, IHC, WB
<b>Target</b>	ECE1,Endothelin-converting enzyme 1,ECE-1
<b>Purification</b>	Purified by antigen affinity column.
<b>Accession</b>	P42892
<b>Stability and Storage</b>	Use a manual defrost freezer and avoid repeated freeze thaw cycles. Store at 2 to 8°C for frequent use. Store at -20 to -80°C for twelve months from the date of receipt.
<b>Note</b>	For research use only.

## Data Image

---



Western Blot

Various lysates were subjected to SDS PAGE followed by western blot with ECE1 antibody (PHE38401) at 1 $\mu$ g/ml.

Lane 1: A549 cell lysate

Lane 2: HUVEC cell lysate

Lane 3: NIH3T3 cell lysate

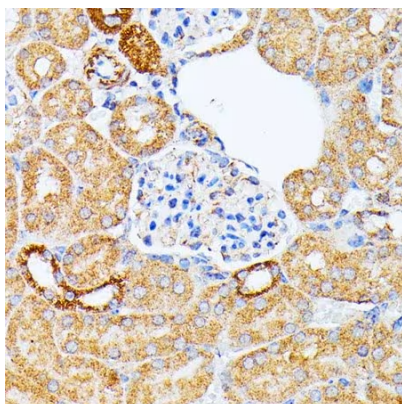
Lane 4: Jurkat cell lysate

Lane 5: H1299 cell lysate

Second Ab: Goat Anti-Rabbit IgG H&L Polyclonal antibody, HRP (PTB96431) at 0.1  $\mu$ g/mL.

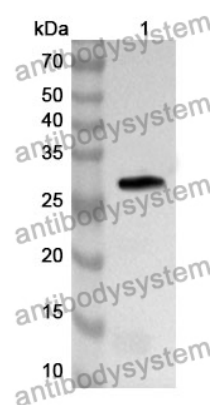
Predict MW: 88 kDa

Observed MW: 125 kDa



Immunohistochemical

Immunohistochemical analysis of mouse kidney stained for ECE1 with PHE38401.



Western Blot

Recombinant Protein lysates were subjected to SDS PAGE followed by western blot with ECE1 antibody (PHE38401) at 1  $\mu$ g/ml.

Lane 1: Recombinant Protein

Second Ab: Goat Anti-Rabbit IgG H&L Polyclonal antibody, HRP (PTB96431) at 0.1  $\mu$ g/mL.

Predict MW: 31 kDa

Observed MW: 31 kDa