

# Anti-ACAA2 Polyclonal Antibody

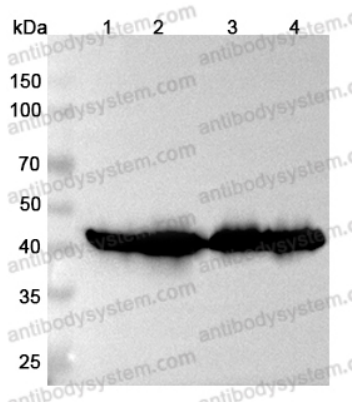
## Summary

---

<b>Catalog No.</b>	PHE37401
<b>Host species</b>	Rabbit
<b>Tested applications</b>	ELISA: 1:4000-1:8000, IHC: 1:50-1:100, WB: 1:1000-1:4000
<b>Species reactivity</b>	Human, Mouse, Rat
<b>Immunogen</b>	E. coli - derived recombinant Human ACAA2 (Arg90-Ala397).
<b>Form</b>	Liquid
<b>Storage buffer</b>	0.01M PBS, pH 7.4, 50% Glycerol, 0.05% Proclin 300.
<b>Clonality</b>	Polyclonal
<b>Isotype</b>	IgG
<b>Applications</b>	ELISA, IHC, WB
<b>Target</b>	Acetyl-CoA acyltransferase, Mitochondrial 3-oxoacyl-CoA thiolase, T1, Beta-ketothiolase, 3-ketoacyl-CoA thiolase, mitochondrial, Acyl-CoA hydrolase, mitochondrial, ACAA2, Acetyl-CoA acetyltransferase
<b>Purification</b>	Purified by antigen affinity column.
<b>Accession</b>	P42765
<b>Stability and Storage</b>	Use a manual defrost freezer and avoid repeated freeze thaw cycles. Store at 2 to 8°C for frequent use. Store at -20 to -80°C for twelve months from the date of receipt.
<b>Note</b>	For research use only.

## Data Image

---



Western Blot

Various lysates were subjected to SDS PAGE followed by western blot with ACAA2 antibody (PHE37401) at 1 $\mu$ g/ml.

Lane 1: Mouse heart lysate

Lane 2: Mouse liver lysate

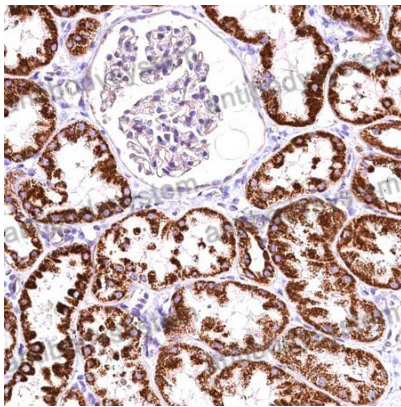
Lane 3: Rat heart lysate

Lane 4: Rat liver lysate

Second Ab: Goat Anti-Rabbit IgG H&L Polyclonal antibody, HRP (PTB96431) at 0.1  $\mu$ g/mL.

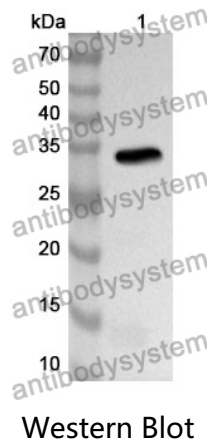
Predict MW: 41 kDa

Observed MW: 41 kDa



Immunohistochemical

Immunohistochemical analysis of human kidney stained for ACAA2 with PHE37401.



Recombinant Protein lysates were subjected to SDS PAGE followed by western blot with ACAA2 antibody (PHE37401) at 1  $\mu\text{g/ml}$ .

Lane 1: Recombinant Protein

Second Ab: Goat Anti-Rabbit IgG H&L Polyclonal antibody, HRP (PTB96431) at 0.1  $\mu\text{g/mL}$ .

Predict MW: 35 kDa

Observed MW: 35 kDa