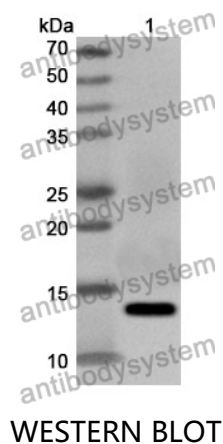


Anti-CD231/TSPAN7 Polyclonal Antibody

Summary

Catalog No.	PHE33301
Host species	Rabbit
Tested applications	ELISA: 1:4000-1:8000, IHC: 1:50-1:100, WB: 1:1000-1:4000
Species reactivity	Human, Mouse, Rat
Immunogen	E. coli - derived recombinant Human CD231/TSPAN7 (Arg113-Met213).
Form	Liquid
Storage buffer	0.01M PBS, pH 7.4, 50% Glycerol, 0.05% Proclin 300.
Clonality	Polyclonal
Isotype	IgG
Applications	ELISA, IHC, WB
Target	Membrane component chromosome X surface marker 1,CD231,Cell surface glycoprotein A15,Tspan-7,TM4SF2,TALLA-1,Transmembrane 4 superfamily member 2,Tetraspanin-7,MXS1,DXS1692E,TSPAN7,T-cell acute lymphoblastic leukemia-associated antigen 1,A15
Purification	Purified by antigen affinity column.
Accession	P41732
Stability and Storage	Use a manual defrost freezer and avoid repeated freeze thaw cycles. Store at 2 to 8°C for frequent use. Store at -20 to -80°C for twelve months from the date of receipt.
Note	For research use only.

Data Image



Recombinant Protein lysates were subjected to SDS PAGE followed by western blot with CD231/TSPAN7 antibody (PHE33301) at 1 µg/ml.

Lane 1: Recombinant protein

Second Ab: Goat Anti-Rabbit IgG H&L Polyclonal antibody, HRP (PTB96431) at 0.1 µg/mL.

Predict MW: 14 kDa

Observed MW: 14 kDa