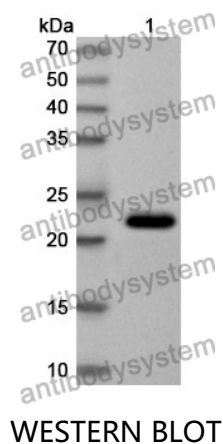


Anti-CD130/IL6ST Polyclonal Antibody

Summary

Catalog No.	PHE25301
Host species	Rabbit
Tested applications	ELISA: 1:4000-1:8000, IHC: 1:50-1:100, WB: 1:1000-1:4000
Species reactivity	Human
Immunogen	E. coli - derived recombinant Human CD130/IL6ST (Thr392-Thr566).
Form	Liquid
Storage buffer	0.01M PBS, pH 7.4, 50% Glycerol, 0.05% Proclin 300.
Clonality	Polyclonal
Isotype	IgG
Applications	ELISA, IHC, WB
Target	IL-6 receptor subunit beta,CDw130,IL-6R-beta,Membrane glycoprotein 130,CD130,Oncostatin-M receptor subunit alpha,Interleukin-6 signal transducer,IL-6RB,IL-6R subunit beta,IL6ST,Interleukin-6 receptor subunit beta,gp130
Purification	Purified by antigen affinity column.
Accession	P40189
Stability and Storage	Use a manual defrost freezer and avoid repeated freeze thaw cycles. Store at 2 to 8°C for frequent use. Store at -20 to -80°C for twelve months from the date of receipt.
Note	For research use only.

Data Image



Recombinant Protein lysates were subjected to SDS PAGE followed by western blot with CD130/IL6ST antibody (PHE25301) at 1 µg/ml.

Lane 1: Recombinant protein

Second Ab: Goat Anti-Rabbit IgG H&L Polyclonal antibody, HRP (PTB96431) at 0.1 µg/mL.

Predict MW: 22 kDa

Observed MW: 22 kDa