

# Anti-HSPA9 Polyclonal Antibody

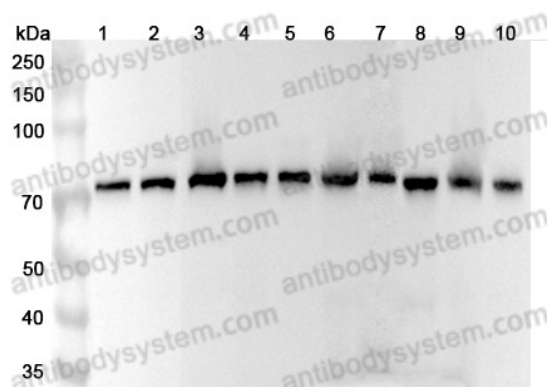
## Summary

---

<b>Catalog No.</b>	PHE23201
<b>Host species</b>	Rabbit
<b>Tested applications</b>	ELISA: 1:4000-1:8000, IHC: 1:50-1:100, WB: 1:1000-1:4000
<b>Species reactivity</b>	Human, Mouse, Rat
<b>Immunogen</b>	E. coli - derived recombinant Human HSPA9 (Ser65-Ala311).
<b>Form</b>	Liquid
<b>Storage buffer</b>	0.01M PBS, pH 7.4, 50% Glycerol, 0.05% Proclin 300.
<b>Clonality</b>	Polyclonal
<b>Isotype</b>	IgG
<b>Applications</b>	ELISA, IHC, WB
<b>Target</b>	mt-HSP70,HSPA9B,MOT,Peptide-binding protein 74,Stress-70 protein,mitochondrial,PBP74,GRP-75,Mortalin,Heat shock 70 kDa protein 9,GRP75,75 kDa glucose-regulated protein,HSPA9
<b>Purification</b>	Purified by antigen affinity column.
<b>Accession</b>	P38646
<b>Stability and Storage</b>	Use a manual defrost freezer and avoid repeated freeze thaw cycles. Store at 2 to 8°C for frequent use. Store at -20 to -80°C for twelve months from the date of receipt.
<b>Note</b>	For research use only.

## Data Image

---



Western Blot

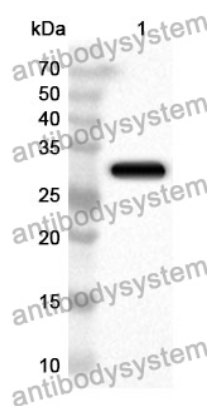
Various lysates were subjected to SDS PAGE followed by western blot with Mortalin antibody (PHE23201) at 1 µg/ml.

Lane 1: Hela cell lysate  
 Lane 2: K562 cell lysate  
 Lane 3: A549 cell lysate  
 Lane 4: MCF-7 cell lysate  
 Lane 5: HepG2 cell lysate  
 Lane 6: Mouse liver lysate  
 Lane 7: Mouse brain lysate  
 Lane 8: Mouse kidney lysate  
 Lane 9: Rat liver lysate  
 Lane 10: Rat brain lysate

Second Ab: Goat Anti-Rabbit IgG H&L Polyclonal antibody, HRP (PTB96431) at 0.1 µg/mL.

Predict MW: 74 kDa

Observed MW: 74 kDa



Western Blot

Recombinant Protein lysates were subjected to SDS PAGE followed by western blot with HSPA9 antibody (PHE23201) at 1 µg/ml.

Lane 1: Recombinant Protein

Second Ab: Goat Anti-Rabbit IgG H&L Polyclonal antibody, HRP (PTB96431) at 0.1 µg/mL.

Predict MW: 29 kDa

Observed MW: 29 kDa