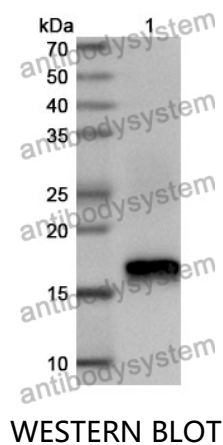


Anti-CD292/BMPR1A Polyclonal Antibody

Summary

Catalog No.	PHE19201
Host species	Rabbit
Tested applications	ELISA: 1:4000-1:8000, IHC: 1:50-1:100, WB: 1:1000-1:4000
Species reactivity	Human, Mouse, Rat
Immunogen	E. coli - derived recombinant Human CD292/BMPR1A (Gln24-Arg152).
Form	Liquid
Storage buffer	0.01M PBS, pH 7.4, 50% Glycerol, 0.05% Proclin 300.
Clonality	Polyclonal
Isotype	IgG
Applications	ELISA, IHC, WB
Target	ACVRLK3,Bone morphogenetic protein receptor type-1A,ALK3,BMPR-1A,Serine/threonine-protein kinase receptor R5,SKR5,Activin receptor-like kinase 3,ALK-3,BMP type-1A receptor,BMPR1A,CD292
Purification	Purified by antigen affinity column.
Accession	P36894
Stability and Storage	Use a manual defrost freezer and avoid repeated freeze thaw cycles. Store at 2 to 8°C for frequent use. Store at -20 to -80°C for twelve months from the date of receipt.
Note	For research use only.

Data Image



Recombinant Protein lysates were subjected to SDS PAGE followed by western blot with CD292/BMPRI1A antibody (PHE19201) at 1 μ g/ml.

Lane 1: Recombinant protein

Second Ab: Goat Anti-Rabbit IgG H&L Polyclonal antibody, HRP (PTB96431) at 0.1 μ g/mL.

Predict MW: 17 kDa

Observed MW: 17 kDa