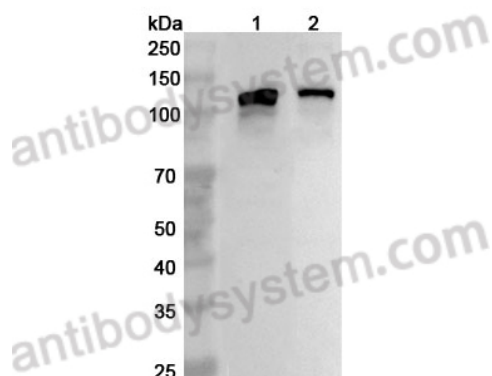


Anti-CD135/FLT3 Polyclonal Antibody

Summary

Catalog No.	PHE19101
Host species	Rabbit
Tested applications	ELISA: 1:4000-1:8000, IHC: 1:50-1:100, WB: 1:1000-1:4000
Species reactivity	Human, Mouse, Rat
Immunogen	E. coli - derived recombinant Human CD135/FLT3 (Asn27-Tyr376).
Form	Liquid
Storage buffer	0.01M PBS, pH 7.4, 50% Glycerol, 0.05% Proclin 300.
Clonality	Polyclonal
Isotype	IgG
Applications	ELISA, IHC, WB
Target	FLT3, Stem cell tyrosine kinase 1, Fetal liver kinase-2, STK-1, STK1, FLK2, CD135, Receptor-type tyrosine-protein kinase FLT3, Fms-like tyrosine kinase 3, FL cytokine receptor, FLK-2, FLT-3
Purification	Purified by antigen affinity column.
Accession	P36888
Stability and Storage	Use a manual defrost freezer and avoid repeated freeze thaw cycles. Store at 2 to 8°C for frequent use. Store at -20 to -80°C for twelve months from the date of receipt.
Note	For research use only.

Data Image



Western Blot

Various lysates were subjected to SDS PAGE followed by western blot with FLT3 antibody (PHE19101) at 1 $\mu\text{g/ml}$.

Lane 1: Mouse brain lysate

Lane 2: Rat brain lysate

Second Ab: Goat Anti-Rabbit IgG H&L Polyclonal antibody, HRP (PTB96431) at 0.1 $\mu\text{g/mL}$.

Predict MW: 113 kDa

Observed MW: 130 kDa