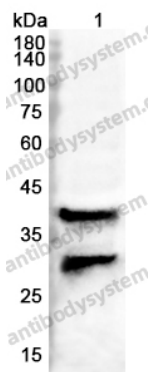


Anti-CHI3L1 Polyclonal Antibody

Summary

Catalog No.	PHE16901
Host species	Rabbit
Tested applications	ELISA: 1:4000-1:8000, IHC: 1:50-1:100, WB: 1:1000-1:4000
Species reactivity	Human, Rat
Immunogen	E. coli - derived recombinant Human CHI3L1 (Asn112-Lys377).
Form	Liquid
Storage buffer	0.01M PBS, pH 7.4, 50% Glycerol, 0.05% Proclin 300.
Clonality	Polyclonal
Isotype	IgG
Applications	ELISA, IHC, WB
Target	CHI3L1,GP-39,YKL-40,Chitinase-3-like protein 1,CGP-39,39 kDa synovial protein,hCGP-39,Cartilage glycoprotein 39
Purification	Purified by antigen affinity column.
Accession	P36222
Stability and Storage	Use a manual defrost freezer and avoid repeated freeze thaw cycles. Store at 2 to 8°C for frequent use. Store at -20 to -80°C for twelve months from the date of receipt.
Note	For research use only.

Data Image



Western blot

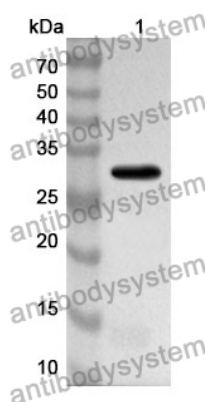
Various lysates were subjected to SDS PAGE followed by western blot with CHI3L1 antibody (PHE16901) at 0.82ug/ml.

Lane 1: THP1 cell lysate

Second Ab: Goat Anti-Rabbit IgG H&L Polyclonal antibody, HRP (PTB96431) at 0.1 µg/mL.

Predict MW: 42 kDa

Observed MW: 30,40 kDa



Western Blot

Recombinant Protein lysates were subjected to SDS PAGE followed by western blot with CHI3L1 antibody (PHE16901) at 1 µg/ml.

Lane 1: Recombinant Protein

Second Ab: Goat Anti-Rabbit IgG H&L Polyclonal antibody, HRP (PTB96431) at 0.1 µg/mL.

Predict MW: 32 kDa

Observed MW: 32 kDa