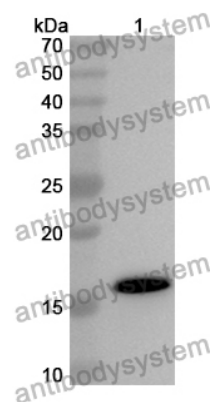


Anti-Pig CSF2/GM-CSF Polyclonal Antibody

Summary

Catalog No.	PPC06701
Host species	Rabbit
Tested applications	ELISA: 1:4000-1:8000, IHC: 1:50-1:100, WB: 1:1000-1:4000
Species reactivity	Pig
Immunogen	E. coli - derived recombinant Pig CSF2/GM-CSF (Ala18-Lys144).
Form	Liquid
Storage buffer	0.01M PBS, pH 7.4, 50% Glycerol, 0.05% Proclin 300.
Clonality	Polyclonal
Isotype	IgG
Applications	ELISA, IHC, WB
Target	Granulocyte-macrophage colony-stimulating factor, GM-CSF, Colony-stimulating factor, CSF, CSF2
Purification	Purified by antigen affinity column.
Accession	Q29118
Stability and Storage	Use a manual defrost freezer and avoid repeated freeze thaw cycles. Store at 2 to 8°C for frequent use. Store at -20 to -80°C for twelve months from the date of receipt.
Note	For research use only.

Data Image



Western Blot

Recombinant Protein lysates were subjected to SDS PAGE followed by western blot with CSF2/GM-CSF antibody (PPC06701) at 1 μ g/ml.

Lane 1: Recombinant protein

Second Ab: Goat Anti-Rabbit IgG H&L Polyclonal antibody, HRP (PTB96431) at 0.1 μ g/mL.

Predict MW: 17 kDa

Observed MW: 17 kDa