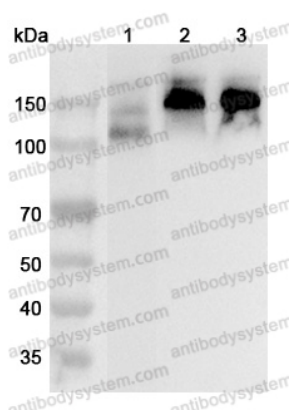


Anti-CD56/NCAM1 Polyclonal Antibody

Summary

Catalog No.	PHC98501
Host species	Rabbit
Tested applications	ELISA: 1:4000-1:8000, IHC: 1:50-1:100, WB: 1:1000-1:4000
Species reactivity	Human, Mouse, Rat
Immunogen	E. coli - derived recombinant Human CD56/NCAM1 (Glu30-Glu352).
Form	Liquid
Storage buffer	0.01M PBS, pH 7.4, 50% Glycerol, 0.05% Proclin 300.
Clonality	Polyclonal
Isotype	IgG
Applications	ELISA, IHC, WB
Target	NCAM-1, NCAM1, CD56, N-CAM-1, NCAM, Neural cell adhesion molecule 1
Purification	Purified by antigen affinity column.
Accession	P13591
Stability and Storage	Use a manual defrost freezer and avoid repeated freeze thaw cycles. Store at 2 to 8°C for frequent use. Store at -20 to -80°C for twelve months from the date of receipt.
Note	For research use only.

Data Image



Western Blot

Various lysates were subjected to SDS PAGE followed by western blot with NCAM1 antibody (PHC98501) at 1µg/ml.

Lane 1: Mouse cerebellum lysate

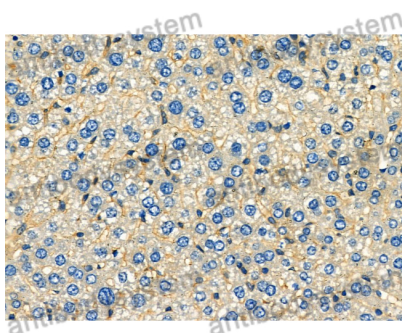
Lane 2: Rat brain lysate

Lane 3: Rat cerebellum lysate

Second Ab: Goat Anti-Rabbit IgG H&L Polyclonal antibody, HRP (PTB96431) at 0.1 µg/mL.

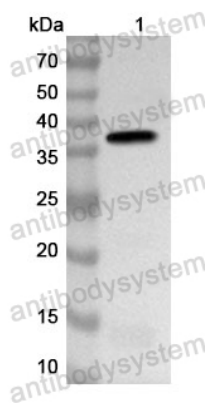
Predict MW: 95 kDa

Observed MW: ~150 kDa



Immunohistochemical analysis of mouse liver stained for NCAM1 with PHC98501.

Immunohistochemical



Western Blot

Recombinant Protein lysates were subjected to SDS PAGE followed by western blot with CD56/NCAM1 antibody (PHC98501) at 1 µg/ml.

Lane 1: Recombinant Protein

Second Ab: Goat Anti-Rabbit IgG H&L Polyclonal antibody, HRP (PTB96431) at 0.1 µg/mL.

Predict MW: 38 kDa

Observed MW: 38 kDa