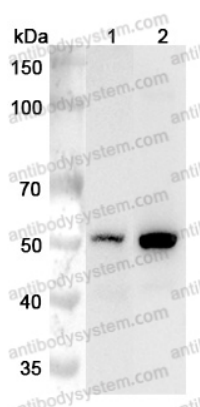


Anti-Human CYP11A1 Polyclonal Antibody

Summary

Catalog No.	PHC13201
Host species	Rabbit
Tested applications	ELISA: 1:4000-1:8000, IHC: 1:50-1:100, WB: 1:1000-1:4000
Species reactivity	Human
Immunogen	E. coli - derived recombinant Human CYP11A1 (Met1-Gly300).
Form	Liquid
Storage buffer	0.01M PBS, pH 7.4, 50% Glycerol, 0.05% Proclin 300.
Clonality	Polyclonal
Isotype	IgG
Applications	ELISA, IHC, WB
Target	Cholesterol side-chain cleavage enzyme, mitochondrial, CYPXIA1, CYP11A, Cholesterol desmolase, Cytochrome P450 11A1, CYP11A1, Cytochrome P450(scc)
Purification	Purified by antigen affinity column.
Accession	P05108
Stability and Storage	Use a manual defrost freezer and avoid repeated freeze thaw cycles. Store at 2 to 8°C for frequent use. Store at -20 to -80°C for twelve months from the date of receipt.
Note	For research use only.

Data Image



Western Blot

Various lysates were subjected to SDS PAGE followed by western blot with CYP11A1 antibody (PHC13201) at 1 µg/ml.

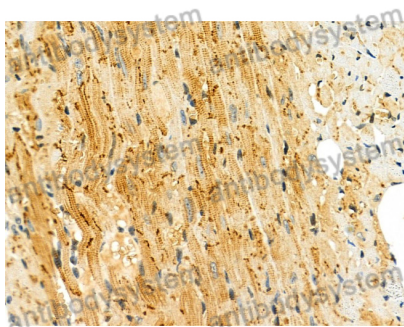
Lane 1: Mouse ovary lysate

Lane 2: Rat ovary lysate

Second Ab: Goat Anti-Rabbit IgG H&L Polyclonal antibody, HRP (PTB96431) at 0.1 µg/mL.

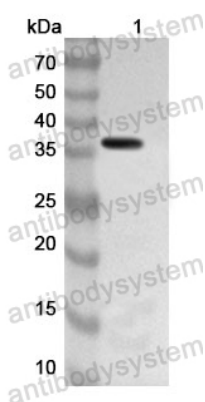
Predict MW: 60 kDa

Observed MW: 52 kDa



Immunohistochemical analysis of mouse heart stained for CYP11A1 with PHC13201.

Immunohistochemical



Western Blot

Recombinant Protein lysates were subjected to SDS PAGE followed by western blot with CYP11A1 antibody (PHC13201) at 1 µg/ml.

Lane 1: Recombinant Protein

Second Ab: Goat Anti-Rabbit IgG H&L Polyclonal antibody, HRP (PTB96431) at 0.1 µg/mL.

Predict MW: 37 kDa

Observed MW: 37 kDa