

# Anti-HSPA8 Polyclonal Antibody

## Summary

---

<b>Catalog No.</b>	PHC85602
<b>Host species</b>	Rabbit
<b>Tested applications</b>	ELISA: 1:4000-1:8000, IHC: 1:50-1:100, WB: 1:1000-1:4000
<b>Species reactivity</b>	Human, Mouse, Rat
<b>Immunogen</b>	E. coli - derived recombinant Human HSPA8 (Met1-Asp646).
<b>Form</b>	Liquid
<b>Storage buffer</b>	0.01M PBS, pH 7.4, 50% Glycerol, 0.05% Proclin 300.
<b>Clonality</b>	Polyclonal
<b>Isotype</b>	IgG
<b>Applications</b>	ELISA, IHC, WB
<b>Target</b>	Lipopolysaccharide-associated protein 1, HSPA10, Heat shock 70 kDa protein 8, LPS-associated protein 1, LAP-1, HSP73, HSC70, HSPA8, Heat shock cognate 71 kDa protein
<b>Purification</b>	Purified by antigen affinity column.
<b>Accession</b>	P11142
<b>Stability and Storage</b>	Use a manual defrost freezer and avoid repeated freeze thaw cycles. Store at 2 to 8°C for frequent use. Store at -20 to -80°C for twelve months from the date of receipt.
<b>Note</b>	For research use only.

## Data Image

---

Various lysates were subjected to SDS PAGE followed by western blot with HSPA8 antibody (PHC85602) at 1µg/ml.

Lane 1: 4T1 cell lysate

Lane 2: MCF-7 cell lysate

Lane 3: PC-12 cell lysate

Lane 4: NIH3T3 cell lysate

Lane 5: Hela cell lysate

Lane 6: U87 cell lysate

Lane 7: Jurkat cell lysate

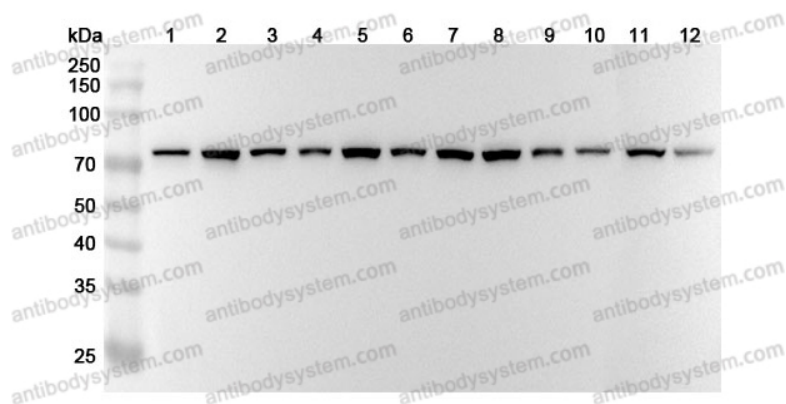
Lane 8: HepG2 cell lysate

Lane 9: A549 cell lysate

Lane 10: Mouse brain lysate

Lane 11: Rat brain lysate

Lane 12: Rat heart lysate



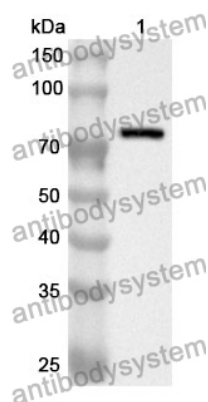
Western Blot

Second Ab: Goat Anti-Rabbit IgG H&L

Polyclonal antibody, HRP (PTB96431) at 0.1 µg/mL.

Predict MW: 71 kDa

Observed MW: 71 kDa



Western Blot

Recombinant Protein lysates were subjected to SDS PAGE followed by western blot with HSPA8 antibody (PHC85602) at 1  $\mu$ g/ml.

Lane 1: Recombinant Protein

Second Ab: Goat Anti-Rabbit IgG H&L  
Polyclonal antibody, HRP (PTB96431) at 0.1  $\mu$ g/mL.

Predict MW: 73 kDa

Observed MW: 73 kDa