

Anti-Human EIF4E Polyclonal Antibody

Summary

Catalog No.	PHC20901
Host species	Rabbit
Tested applications	ELISA: 1:4000-1:8000, IHC: 1:50-1:100, WB: 1:1000-1:4000
Species reactivity	Human
Immunogen	E. coli - derived recombinant Human EIF4E (Asn30-Val217).
Form	Liquid
Storage buffer	0.01M PBS, pH 7.4, 50% Glycerol, 0.05% Proclin 300.
Clonality	Polyclonal
Isotype	IgG
Applications	ELISA, IHC, WB
Target	Eukaryotic translation initiation factor 4E, EIF4F, mRNA cap-binding protein, eIF4E, eIF-4E, eIF-4F 25 kDa subunit, EIF4EL1, EIF4E
Purification	Purified by antigen affinity column.
Accession	P06730
Stability and Storage	Use a manual defrost freezer and avoid repeated freeze thaw cycles. Store at 2 to 8°C for frequent use. Store at -20 to -80°C for twelve months from the date of receipt.
Note	For research use only.

Data Image



Western Blot

Recombinant Protein lysates were subjected to SDS PAGE followed by western blot with EIF4E antibody (PHC20901) at 1 $\mu\text{g/ml}$.

Lane 1: Recombinant protein

Second Ab: Goat Anti-Rabbit IgG H&L Polyclonal antibody, HRP (PTB96431) at 0.1 $\mu\text{g/mL}$.

Predict MW: 24 kDa

Observed MW: 24 kDa

Various lysates were subjected to SDS PAGE followed by western blot with EIF4E antibody (PHC20901) at 1 $\mu\text{g/ml}$.

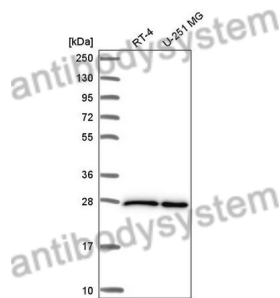
Lane 1: RT-4

Lane 2: U-251 MG

Second Ab: Goat Anti-Rabbit IgG H&L Polyclonal antibody, HRP (PTB96431) at 0.1 $\mu\text{g/mL}$.

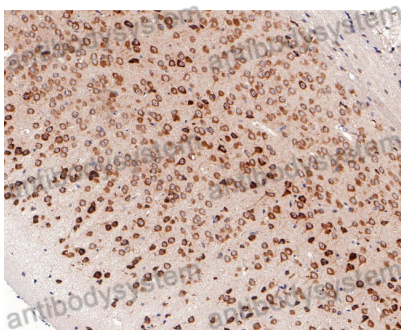
Predict MW: 28 kDa

Observed MW: 28 kDa



Western Blot

Immunohistochemical analysis of mouse brain stained for EIF4E with PHC20901.



Immunohistochemical