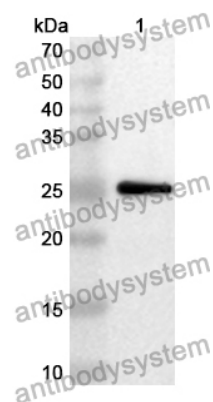


Anti-CNDP2 Polyclonal Antibody

Summary

Catalog No.	PHJ99901
Host species	Rabbit
Tested applications	ELISA: 1:4000-1:8000, IHC: 1:50-1:100, WB: 1:1000-1:4000
Species reactivity	Human, Mouse, Rat
Immunogen	E. coli - derived recombinant Human CNDP2 (Val269-Asp475).
Form	Liquid
Storage buffer	0.01M PBS, pH 7.4, 50% Glycerol, 0.05% Proclin 300.
Clonality	Polyclonal
Isotype	IgG
Applications	ELISA, IHC, WB
Target	Peptidase A, PEPA, CNDP2, Carnosine dipeptidase II, CN2, Epididymis secretory protein Li 13, Glutamate carboxypeptidase-like protein 1, CNDP dipeptidase 2, HEL-S-13, Cytosolic non-specific dipeptidase, CPGL
Purification	Purified by antigen affinity column.
Accession	Q96KP4
Stability and Storage	Use a manual defrost freezer and avoid repeated freeze thaw cycles. Store at 2 to 8°C for frequent use. Store at -20 to -80°C for twelve months from the date of receipt.
Note	For research use only.

Data Image



Western Blot

Recombinant Protein lysates were subjected to SDS PAGE followed by western blot with CNDP2 antibody (PHJ99901) at 1 μ g/ml.

Lane 1: Recombinant protein

Second Ab: Goat Anti-Rabbit IgG H&L Polyclonal antibody, HRP (PTB96431) at 0.1 μ g/mL.

Predict MW: 26 kDa

Observed MW: 26 kDa