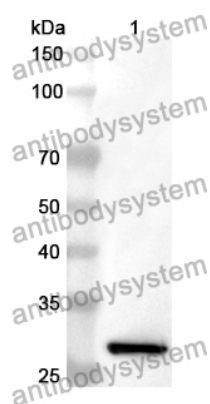


Anti-BCL10 Polyclonal Antibody

Summary

Catalog No.	PHB82401
Host species	Rabbit
Tested applications	ELISA: 1:4000-1:8000, IHC: 1:50-1:100, WB: 1:1000-1:4000
Species reactivity	Human, Mouse, Rat
Immunogen	E. coli - derived recombinant Human BCL10 (Met1-Gln233).
Form	Liquid
Storage buffer	0.01M PBS, pH 7.4, 50% Glycerol, 0.05% Proclin 300.
Clonality	Polyclonal
Isotype	IgG
Applications	ELISA, IHC, WB
Target	CED-3/ICH-1 prodomain homologous E10-like regulator, CLAP, B-cell CLL/lymphoma 10, BCL10, CARD-containing molecule enhancing NF-kappa-B, Cellular homolog of vCARMEN, cCARMEN, CIPER, Bcl-10, hCLAP, Cellular-E10, CARD-like apoptotic protein, c-E10, Mammalian CARD-containing adapter molecule E10, B-cell lymphoma/leukemia 10, mE10
Purification	Purified by antigen affinity column.
Accession	O95999
Stability and Storage	Use a manual defrost freezer and avoid repeated freeze thaw cycles. Store at 2 to 8°C for frequent use. Store at -20 to -80°C for twelve months from the date of receipt.
Note	For research use only.

Data Image



Western Blot

Recombinant Protein lysates were subjected to SDS PAGE followed by western blot with BCL10 antibody (PHB82401) at 1 μ g/ml.

Lane 1: Recombinant protein

Second Ab: Goat Anti-Rabbit IgG H&L Polyclonal antibody, HRP (PTB96431) at 0.1 μ g/mL.

Predict MW: 29 kDa

Observed MW: 29 kDa