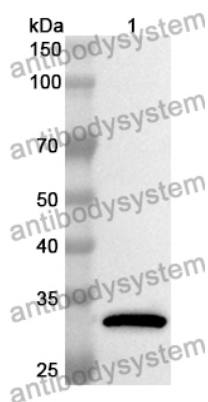


Anti-CBR1 Polyclonal Antibody

Summary

Catalog No.	PHD15601
Host species	Rabbit
Tested applications	ELISA: 1:4000-1:8000, IHC: 1:50-1:100, WB: 1:1000-1:4000
Species reactivity	Human, Mouse, Rat
Immunogen	E. coli - derived recombinant Human CBR1 (Met1-Trp277).
Form	Liquid
Storage buffer	0.01M PBS, pH 7.4, 50% Glycerol, 0.05% Proclin 300.
Clonality	Polyclonal
Isotype	IgG
Applications	ELISA, IHC, WB
Target	CBR1, CRN, Prostaglandin 9-ketoreductase, Carbonyl reductase [NADPH] 1, Short chain dehydrogenase/reductase family 21C member 1, PG-9-KR, Prostaglandin-E(2) 9-reductase, 15-hydroxyprostaglandin dehydrogenase [NADP(+)], NADPH-dependent carbonyl reductase 1, CBR, 20-beta-hydroxysteroid dehydrogenase, SDR21C1
Purification	Purified by antigen affinity column.
Accession	P16152
Stability and Storage	Use a manual defrost freezer and avoid repeated freeze thaw cycles. Store at 2 to 8°C for frequent use. Store at -20 to -80°C for twelve months from the date of receipt.
Note	For research use only.

Data Image



Western Blot

Recombinant Protein lysates were subjected to SDS PAGE followed by western blot with CBR1 antibody (PHD15601) at 1 μ g/ml.

Lane 1: Recombinant protein

Second Ab: Goat Anti-Rabbit IgG H&L Polyclonal antibody, HRP (PTB96431) at 0.1 μ g/mL.

Predict MW: 33 kDa

Observed MW: 33 kDa