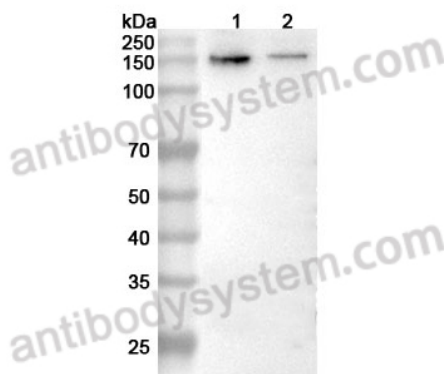


Anti-GRIN2B Polyclonal Antibody

Summary

Catalog No.	PHG44801
Host species	Rabbit
Tested applications	ELISA: 1:4000-1:8000, IHC: 1:50-1:100, WB: 1:1000-1:4000
Species reactivity	Human, Mouse, Rat
Immunogen	E. coli - derived recombinant Human GRIN2B (Tyr1133-Val1484).
Form	Liquid
Storage buffer	0.01M PBS, pH 7.4, 50% Glycerol, 0.05% Proclin 300.
Concentration	0.5 mg/ml
Clonality	Polyclonal
Isotype	IgG
Applications	ELISA, IHC, WB
Target	GluN2B, Glutamate receptor ionotropic, NMDA 2B, GRIN2B, NMDAR2B, NR2B, Glutamate [NMDA] receptor subunit epsilon-2, N-methyl-D-aspartate receptor subunit 3, N-methyl D-aspartate receptor subtype 2B, hNR3, NR3
Purification	Purified by antigen affinity column.
Accession	Q13224
Stability and Storage	Use a manual defrost freezer and avoid repeated freeze thaw cycles. Store at 2 to 8°C for frequent use. Store at -20 to -80°C for twelve months from the date of receipt.
Note	For research use only.

Data Image



WESTERN-BLOT



Western Blot

Various lysates were subjected to SDS PAGE followed by western blot with GRIN2B antibody (PHG44801) at 1 µg/ml.

Lane 1: Mouse brain lysate

Lane 2: Rat brain lysate

Second Ab: Goat Anti-Rabbit IgG H&L Polyclonal antibody, HRP (PTB96431) at 0.1 µg/mL.

Predict MW: 166 kDa

Observed MW: 166 kDa

Recombinant Protein lysates were subjected to SDS PAGE followed by western blot with GRIN2B antibody (PHG44801) at 1 µg/ml.

Lane 1: Recombinant protein

Second Ab: Goat Anti-Rabbit IgG H&L Polyclonal antibody, HRP (PTB96431) at 0.1 µg/mL.

Predict MW: 41 kDa

Observed MW: 41 kDa