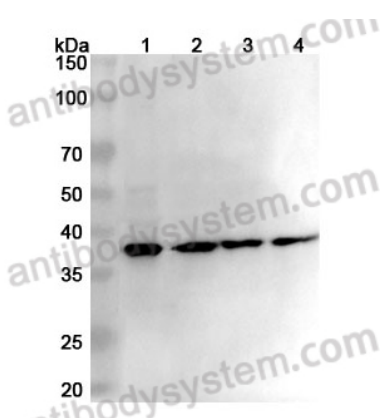


Anti-EIF2S1 Polyclonal Antibody

Summary

Catalog No.	PHC15501
Host species	Rabbit
Tested applications	ELISA: 1:4000-1:8000, IHC: 1:50-1:100, WB: 1:1000-1:4000
Species reactivity	Human, Mouse, Rat
Immunogen	E. coli - derived recombinant Human EIF2S1 (Met1-Thr239).
Form	Liquid
Storage buffer	0.01M PBS, pH 7.4, 50% Glycerol, 0.05% Proclin 300.
Clonality	Polyclonal
Isotype	IgG
Applications	ELISA, IHC, WB
Target	EIF2A, eIF-2A, Eukaryotic translation initiation factor 2 subunit alpha, Eukaryotic translation initiation factor 2 subunit 1, EIF2S1, eIF-2-alpha, eIF-2alpha
Purification	Purified by antigen affinity column.
Accession	P05198
Stability and Storage	Use a manual defrost freezer and avoid repeated freeze thaw cycles. Store at 2 to 8°C for frequent use. Store at -20 to -80°C for twelve months from the date of receipt.
Note	For research use only.

Data Image



Western Blot

Various lysates were subjected to SDS PAGE followed by western blot with EIF2S1 antibody (PHC15501) at 1 μ g/ml.

Lane 1: Mouse spleen lysate

Lane 2: Rat spleen lysate

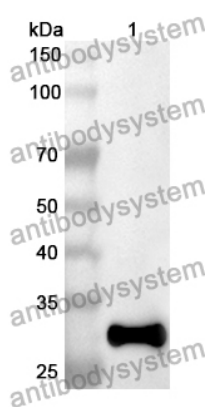
Lane 3: Rat lung lysate

Lane 4: Rat kidney lysate

Second Ab: Goat Anti-Rabbit IgG H&L Polyclonal antibody, HRP (PTB96431) at 0.1 μ g/mL.

Predict MW: 36 kDa

Observed MW: 36 kDa



Western Blot

Recombinant Protein lysates were subjected to SDS PAGE followed by western blot with EIF2S1 antibody (PHC15501) at 1 μ g/ml.

Lane 1: Recombinant protein

Second Ab: Goat Anti-Rabbit IgG H&L Polyclonal antibody, HRP (PTB96431) at 0.1 μ g/mL.

Predict MW: 30 kDa

Observed MW: 30 kDa