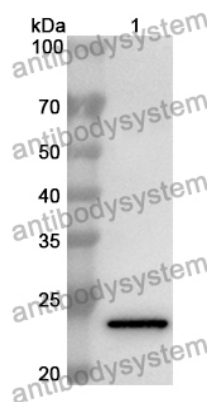


Anti-Human LAMA5 Polyclonal Antibody

Summary

Catalog No.	PHA46001
Host species	Rabbit
Tested applications	ELISA: 1:4000-1:8000, IHC: 1:50-1:100, WB: 1:500-1:4000
Species reactivity	Human
Immunogen	E. coli - derived recombinant Human LAMA5 (Pro2736-Cys2929).
Form	Liquid
Storage buffer	0.01M PBS, pH 7.4, 50% Glycerol, 0.05% Proclin 300.
Concentration	0.55 mg/ml
Clonality	Polyclonal
Isotype	IgG
Applications	ELISA, IHC, WB
Target	Laminin subunit alpha-5, Laminin-11 subunit alpha, KIAA1907, KIAA0533, LAMA5, Laminin-10 subunit alpha, Laminin-15 subunit alpha
Purification	Purified by antigen affinity column.
Accession	O15230
Stability and Storage	Use a manual defrost freezer and avoid repeated freeze thaw cycles. Store at 2 to 8°C for frequent use. Store at -20 to -80°C for twelve months from the date of receipt.
Note	For research use only.

Data Image



Western Blot

Recombinant Protein lysates were subjected to SDS PAGE followed by western blot with LAMA5 antibody (PHA46001) at 1 μ g/ml.

Lane 1: Recombinant protein

Second Ab: Goat Anti-Rabbit IgG H&L Polyclonal antibody, HRP (PTB96431) at 0.1 μ g/mL.

Predict MW: 24 kDa

Observed MW: 24 kDa