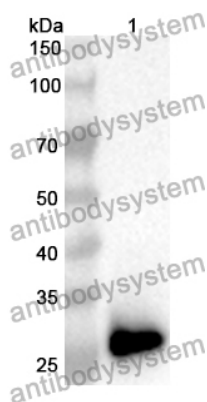


Anti-Human MBD1 Polyclonal Antibody

Summary

Catalog No.	PHJ77901
Host species	Rabbit
Tested applications	ELISA: 1:4000-1:8000, IHC: 1:50-1:100, WB: 1:1000-1:4000
Species reactivity	Human
Immunogen	E. coli - derived recombinant Human MBD1 (Met1-Leu216).
Form	Liquid
Storage buffer	0.01M PBS, pH 7.4, 50% Glycerol, 0.05% Proclin 300.
Clonality	Polyclonal
Isotype	IgG
Applications	ELISA, IHC, WB
Target	CXXC3, PCM1, CXXC-type zinc finger protein 3, Protein containing methyl-CpG-binding domain 1, Methyl-CpG-binding domain protein 1, MBD1, Methyl-CpG-binding protein MBD1
Purification	Purified by antigen affinity column.
Accession	Q9UIS9
Stability and Storage	Use a manual defrost freezer and avoid repeated freeze thaw cycles. Store at 2 to 8°C for frequent use. Store at -20 to -80°C for twelve months from the date of receipt.
Note	For research use only.

Data Image



Western Blot

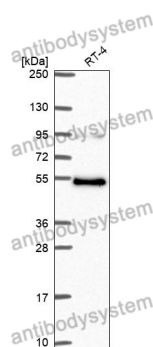
Recombinant Protein lysates were subjected to SDS PAGE followed by western blot with MBD1 antibody (PHJ77901) at 1 µg/ml.

Lane 1: Recombinant protein

Second Ab: Goat Anti-Rabbit IgG H&L Polyclonal antibody, HRP (PTB96431) at 0.1 µg/mL.

Predict MW: 26 kDa

Observed MW: 26 kDa



Western Blot

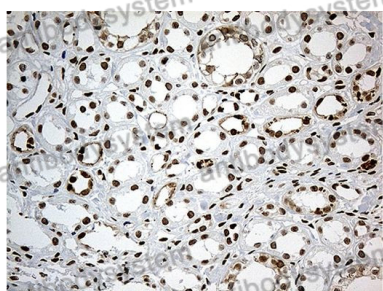
Various lysates were subjected to SDS PAGE followed by western blot with MBD1 antibody (PHJ77901) at 1 µg/ml.

Lane 1: RT-4

Second Ab: Goat Anti-Rabbit IgG H&L Polyclonal antibody, HRP (PTB96431) at 0.1 µg/mL.

Predict MW: 55 kDa

Observed MW: 54 kDa



Immunohistochemical

Immunohistochemical analysis of Human kidney stained for MBD1 with PHJ77901.