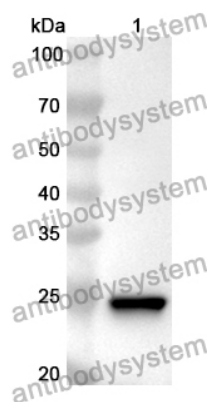


Anti-Human MMP25 Polyclonal Antibody

Summary

Catalog No.	PHJ62601
Host species	Rabbit
Tested applications	ELISA: 1:4000-1:8000, IHC: 1:50-1:100, WB: 1:1000-1:4000
Species reactivity	Human
Immunogen	E. coli - derived recombinant Human MMP25 (Tyr108-Ile313).
Form	Liquid
Storage buffer	0.01M PBS, pH 7.4, 50% Glycerol, 0.05% Proclin 300.
Clonality	Polyclonal
Isotype	IgG
Applications	ELISA, IHC, WB
Target	Membrane-type matrix metalloproteinase 6, MMP-25, MT6MMP, MMPL1, MT-MMP 6, MTMMP6, Membrane-type-6 matrix metalloproteinase, MT6-MMP, Matrix metalloproteinase-25, Leukolysin, MMP25, MMP20
Purification	Purified by antigen affinity column.
Accession	Q9NPA2
Stability and Storage	Use a manual defrost freezer and avoid repeated freeze thaw cycles. Store at 2 to 8°C for frequent use. Store at -20 to -80°C for twelve months from the date of receipt.
Note	For research use only.

Data Image



Western Blot

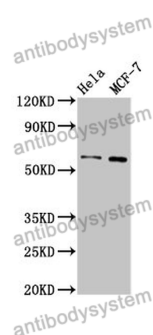
Recombinant Protein lysates were subjected to SDS PAGE followed by western blot with MMP25 antibody (PHJ62601) at 1 µg/ml.

Lane 1: Recombinant protein

Second Ab: Goat Anti-Rabbit IgG H&L Polyclonal antibody, HRP (PTB96431) at 0.1 µg/mL.

Predict MW: 25 kDa

Observed MW: 25 kDa



Western Blot

Various lysates were subjected to SDS PAGE followed by western blot with MMP25 antibody (PHJ62601) at 1 µg/ml.

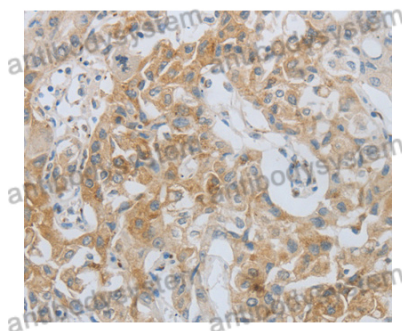
Lane 1: Hela

Lane 2: MCF7

Second Ab: Goat Anti-Rabbit IgG H&L Polyclonal antibody, HRP (PTB96431) at 0.1 µg/mL.

Predict MW: 62 kDa

Observed MW: 62 kDa



Immunohistochemical

Immunohistochemical analysis of Human lung cancer tissue stained for MMP25 with PHJ62601.