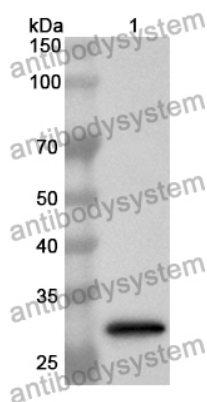


Anti-Human CEL Polyclonal Antibody

Summary

Catalog No.	PHD35801
Host species	Rabbit
Tested applications	ELISA: 1:4000-1:8000, IHC: 1:50-1:100, WB: 1:1000-1:4000
Species reactivity	Human
Immunogen	E. coli - derived recombinant Human CEL (Asp117-Glu361).
Form	Liquid
Storage buffer	0.01M PBS, pH 7.4, 50% Glycerol, 0.05% Proclin 300.
Clonality	Polyclonal
Isotype	IgG
Applications	ELISA, IHC, WB
Target	Carboxyl ester lipase, Bucelipase, Sterol esterase, Bile salt-activated lipase, BAL, Bile salt-stimulated lipase, Cholesterol esterase, Pancreatic lysophospholipase, CEL, BSSL
Purification	Purified by antigen affinity column.
Accession	P19835
Stability and Storage	Use a manual defrost freezer and avoid repeated freeze thaw cycles. Store at 2 to 8°C for frequent use. Store at -20 to -80°C for twelve months from the date of receipt.
Note	For research use only.

Data Image



Western Blot

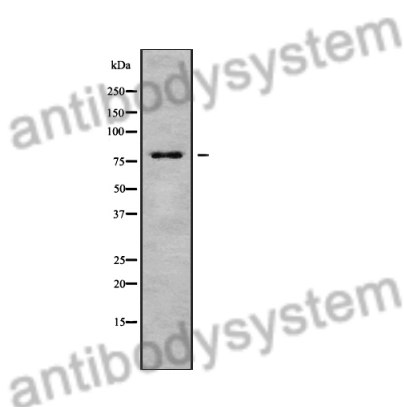
Recombinant Protein lysates were subjected to SDS PAGE followed by western blot with CEL antibody (PHD35801) at 1 μ g/ml.

Lane 1: Recombinant protein

Second Ab: Goat Anti-Rabbit IgG H&L Polyclonal antibody, HRP (PTB96431) at 0.1 μ g/mL.

Predict MW: 29 kDa

Observed MW: 29 kDa



Western Blot

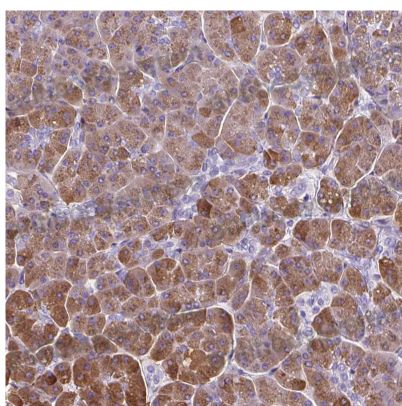
Various lysates were subjected to SDS PAGE followed by western blot with CEL antibody (PHD35801) at 1 μ g/ml.

Lane 1: COLO205

Second Ab: Goat Anti-Rabbit IgG H&L Polyclonal antibody, HRP (PTB96431) at 0.1 μ g/mL.

Predict MW: 79 kDa

Observed MW: 79 kDa



Immunohistochemical

Immunohistochemical analysis of human pancreas stained for CEL with PHD35801.