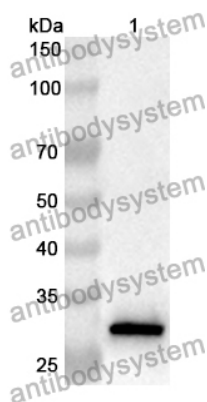


Anti-Human BRCA2 Polyclonal Antibody

Summary

Catalog No.	PHE83701
Host species	Rabbit
Tested applications	ELISA: 1:4000-1:8000, IHC: 1:50-1:200, WB: 1:500-1:4000
Species reactivity	Human
Immunogen	E. coli - derived recombinant Human BRCA2 (Lys2308-His2537).
Form	Liquid
Storage buffer	0.01M PBS, pH 7.4, 50% Glycerol, 0.05% Proclin 300.
Concentration	0.64 mg/ml
Clonality	Polyclonal
Isotype	IgG
Applications	ELISA, IHC, WB
Target	BRCA2, FANCD1, FACD, Fanconi anemia group D1 protein, Breast cancer type 2 susceptibility protein
Purification	Purified by antigen affinity column.
Accession	P51587
Stability and Storage	Use a manual defrost freezer and avoid repeated freeze thaw cycles. Store at 2 to 8°C for frequent use. Store at -20 to -80°C for twelve months from the date of receipt.
Note	For research use only.

Data Image



Western Blot

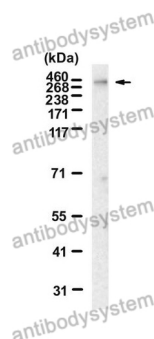
Recombinant Protein lysates were subjected to SDS PAGE followed by western blot with BRCA2 antibody (PHE83701) at 1 µg/ml.

Lane 1: Recombinant protein

Second Ab: Goat Anti-Rabbit IgG H&L Polyclonal antibody, HRP (PTB96431) at 0.1 µg/mL.

Predict MW: 29 kDa

Observed MW: 29 kDa



Western Blot

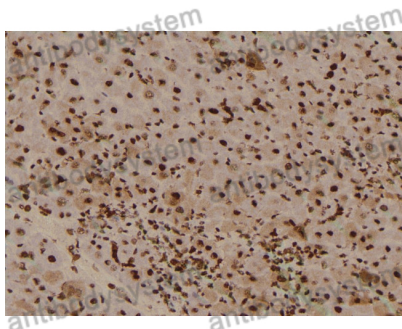
Various lysates were subjected to SDS PAGE followed by western blot with BRCA2 antibody (PHE83701) at 1 µg/ml.

Lane 1: Human cerebral cortex

Second Ab: Goat Anti-Rabbit IgG H&L Polyclonal antibody, HRP (PTB96431) at 0.1 µg/mL.

Predict MW: 384 kDa

Observed MW: 384 kDa



Immunohistochemical

Immunohistochemical analysis of mouse liver stained for BRCA2 with PHE83701.