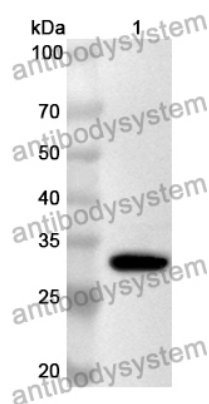


Anti-CC2D1A Polyclonal Antibody

Summary

| | |
|------------------------------|--|
| Catalog No. | PHJ06901 |
| Host species | Rabbit |
| Tested applications | ELISA: 1:4000-1:8000, IHC: 1:50-1:100, WB: 1:1000-1:4000 |
| Species reactivity | Human, Mouse, Rat |
| Immunogen | E. coli - derived recombinant Human CC2D1A (Pro675-Ser944). |
| Form | Liquid |
| Storage buffer | 0.01M PBS, pH 7.4, 50% Glycerol, 0.05% Proclin 300. |
| Clonality | Polyclonal |
| Isotype | IgG |
| Applications | ELISA, IHC, WB |
| Target | AKI1, Five prime repressor element under dual repression-binding protein 1, Akt kinase-interacting protein 1, Freud-1, Coiled-coil and C2 domain-containing protein 1A, FRE under dual repression-binding protein 1, Putative NF-kappa-B-activating protein 023N, CC2D1A |
| Purification | Purified by antigen affinity column. |
| Accession | Q6P1N0 |
| Stability and Storage | Use a manual defrost freezer and avoid repeated freeze thaw cycles. Store at 2 to 8°C for frequent use. Store at -20 to -80°C for twelve months from the date of receipt. |
| Note | For research use only. |

Data Image



Western Blot

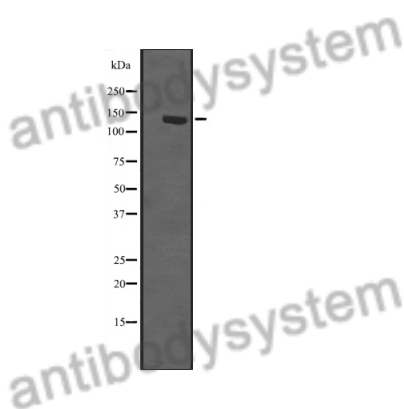
Recombinant Protein lysates were subjected to SDS PAGE followed by western blot with CC2D1A antibody (PHJ06901) at 1 µg/ml.

Lane 1: Recombinant protein

Second Ab: Goat Anti-Rabbit IgG H&L Polyclonal antibody, HRP (PTB96431) at 0.1 µg/mL.

Predict MW: 33 kDa

Observed MW: 33 kDa



Western Blot

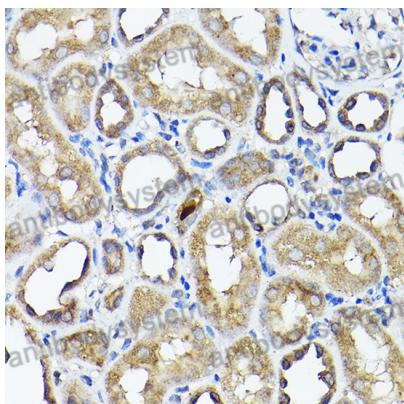
Various lysates were subjected to SDS PAGE followed by western blot with CC2D1A antibody (PHJ06901) at 1 µg/ml.

Lane 1: 293T

Second Ab: Goat Anti-Rabbit IgG H&L Polyclonal antibody, HRP (PTB96431) at 0.1 µg/mL.

Predict MW: 104 kDa

Observed MW: 130 kDa



Immunohistochemical

Immunohistochemical analysis of rat kidney stained for CC2D1A with PHJ06901.