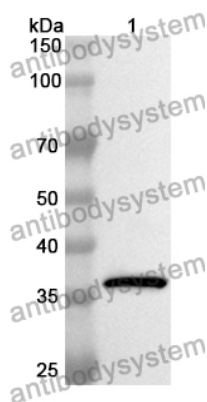


Anti-EED Polyclonal Antibody

Summary

Catalog No.	PHB23801
Host species	Rabbit
Tested applications	ELISA: 1:4000-1:8000, IHC: 1:50-1:100, WB: 1:1000-1:4000
Species reactivity	Human, Mouse, Rat
Immunogen	E. coli - derived recombinant Human EED (Asp142-Arg441).
Form	Liquid
Storage buffer	0.01M PBS, pH 7.4, 50% Glycerol, 0.05% Proclin 300.
Clonality	Polyclonal
Isotype	IgG
Applications	ELISA, IHC, WB
Target	Polycomb protein EED, WAIT-1, EED, hEED, WD protein associating with integrin cytoplasmic tails 1, Embryonic ectoderm development protein
Purification	Purified by antigen affinity column.
Accession	O75530
Stability and Storage	Use a manual defrost freezer and avoid repeated freeze thaw cycles. Store at 2 to 8°C for frequent use. Store at -20 to -80°C for twelve months from the date of receipt.
Note	For research use only.

Data Image



Western Blot

Recombinant Protein lysates were subjected to SDS PAGE followed by western blot with EED antibody (PHB23801) at 1 μ g/ml.

Lane 1: Recombinant protein

Second Ab: Goat Anti-Rabbit IgG H&L Polyclonal antibody, HRP (PTB96431) at 0.1 μ g/mL.

Predict MW: 37 kDa

Observed MW: 37 kDa

Various lysates were subjected to SDS PAGE followed by western blot with EED antibody (PHB23801) at 1 μ g/ml.

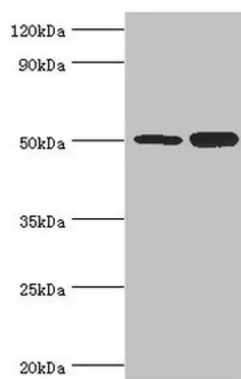
Lane 1: Hela

Lane 2: K562

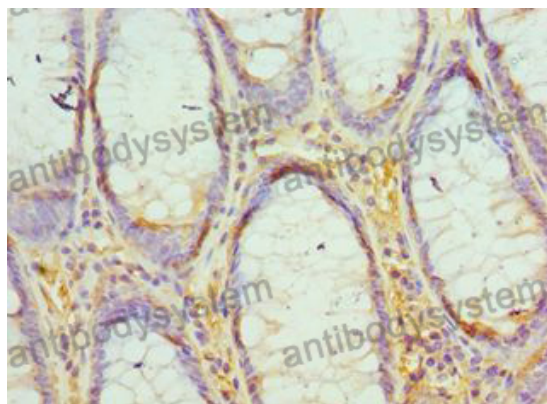
Second Ab: Goat Anti-Rabbit IgG H&L Polyclonal antibody, HRP (PTB96431) at 0.1 μ g/mL.

Predict MW: 50 kDa

Observed MW: 50 kDa



Western Blot



Immunohistochemical

Immunohistochemical analysis of human colon cancer tissue stained for EED with PHB23801.