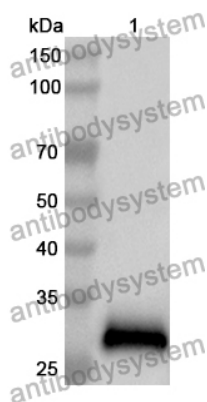


Anti-DOC2B Polyclonal Antibody

Summary

Catalog No.	PHG74201
Host species	Rabbit
Tested applications	ELISA: 1:4000-1:8000, IHC: 1:50-1:100, WB: 1:1000-1:4000
Species reactivity	Human, Mouse, Rat
Immunogen	E. coli - derived recombinant Human DOC2B (Gly173-Arg397).
Form	Liquid
Storage buffer	0.01M PBS, pH 7.4, 50% Glycerol, 0.05% Proclin 300.
Clonality	Polyclonal
Isotype	IgG
Applications	ELISA, IHC, WB
Target	DOC2B, Doc2-beta, Double C2-like domain-containing protein beta, DOC2BL
Purification	Purified by antigen affinity column.
Accession	Q14184
Stability and Storage	Use a manual defrost freezer and avoid repeated freeze thaw cycles. Store at 2 to 8°C for frequent use. Store at -20 to -80°C for twelve months from the date of receipt.
Note	For research use only.

Data Image



Western Blot

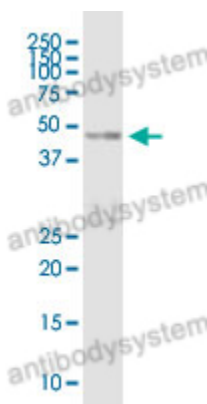
Recombinant Protein lysates were subjected to SDS PAGE followed by western blot with DOC2B antibody (PHG74201) at 1 μ g/ml.

Lane 1: Recombinant protein

Second Ab: Goat Anti-Rabbit IgG H&L Polyclonal antibody, HRP (PTB96431) at 0.1 μ g/mL.

Predict MW: 28 kDa

Observed MW: 28 kDa



Western Blot

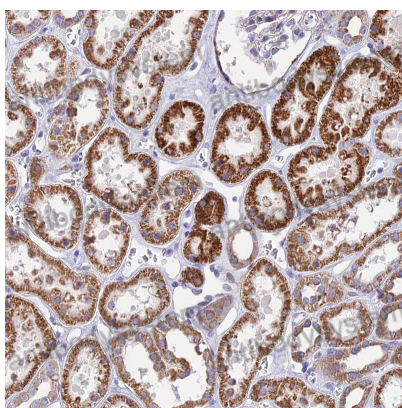
Various lysates were subjected to SDS PAGE followed by western blot with DOC2B antibody (PHG74201) at 1 μ g/ml.

Lane 1: Human colon

Second Ab: Goat Anti-Rabbit IgG H&L Polyclonal antibody, HRP (PTB96431) at 0.1 μ g/mL.

Predict MW: 46 kDa

Observed MW: 46 kDa



Immunohistochemical

Immunohistochemical analysis of human kidney stained for DOC2B with PHG74201.