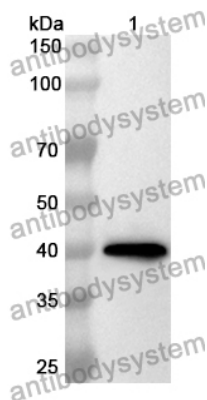


Anti-Human DSC2 Polyclonal Antibody

Summary

Catalog No.	PHF94101
Host species	Rabbit
Tested applications	ELISA: 1:4000-1:8000, IHC: 1:50-1:100, WB: 1:1000-1:4000
Species reactivity	Human
Immunogen	E. coli - derived recombinant Human DSC2 (Arg136-Cys471).
Form	Liquid
Storage buffer	0.01M PBS, pH 7.4, 50% Glycerol, 0.05% Proclin 300.
Clonality	Polyclonal
Isotype	IgG
Applications	ELISA, IHC, WB
Target	Desmosomal glycoprotein II, Desmocollin-2, DSC2, DSC3, Cadherin family member 2, CDHF2, Desmosomal glycoprotein III, Desmocollin-3
Purification	Purified by antigen affinity column.
Accession	Q02487
Stability and Storage	Use a manual defrost freezer and avoid repeated freeze thaw cycles. Store at 2 to 8°C for frequent use. Store at -20 to -80°C for twelve months from the date of receipt.
Note	For research use only.

Data Image



Western Blot

Recombinant Protein lysates were subjected to SDS PAGE followed by western blot with DSC2 antibody (PHF94101) at 1 µg/ml.

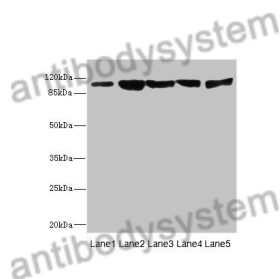
Lane 1: Recombinant protein

Second Ab: Goat Anti-Rabbit IgG H&L Polyclonal antibody, HRP (PTB96431) at 0.1 µg/mL.

Predict MW: 40 kDa

Observed MW: 40 kDa

Various lysates were subjected to SDS PAGE followed by western blot with DSC2 antibody (PHF94101) at 1 µg/ml.



Western Blot

Lane 1: Rat heart

Lane 2: A549

Lane 3: HepG2

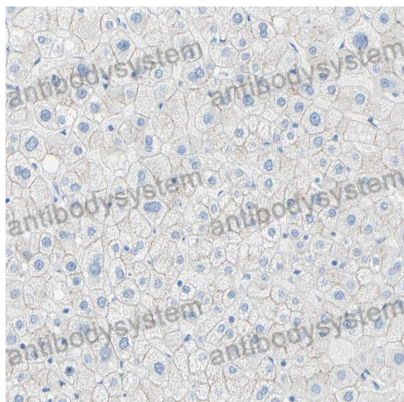
Lane 4: Jurkat

Lane 5: 293T

Second Ab: Goat Anti-Rabbit IgG H&L Polyclonal antibody, HRP (PTB96431) at 0.1 µg/mL.

Predict MW: 100 kDa

Observed MW: 100 kDa



Immunohistochemical analysis of human liver stained for DSC2 with PHF94101.

Immunohistochemical