

Anti-HLTF Polyclonal Antibody

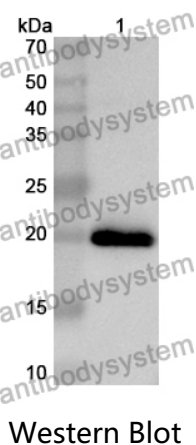
Summary

Catalog No.	PHG81801
Host species	Rabbit
Tested applications	ELISA: 1:4000-1:8000, IHC: 1:50-1:100, WB: 1:1000-1:4000
Species reactivity	Human, Mouse, Rat
Immunogen	E. coli - derived recombinant Human HLTF (Ala837-Lys996).
Form	Liquid
Storage buffer	0.01M PBS, pH 7.4, 50% Glycerol, 0.05% Proclin 300.
Clonality	Polyclonal
Isotype	IgG
Applications	ELISA, IHC, WB
Target	HIP116, RING-type E3 ubiquitin transferase HLTF, SNF2L3, DNA-binding protein/plasminogen activator inhibitor 1 regulator, HLTF, Sucrose nonfermenting protein 2-like 3, ZBU1, SWI/SNF-related matrix-associated actin-dependent regulator of chromatin subfamily A member 3, Helicase-like transcription factor, RING finger protein 80, SMARCA3, HIP116A, RNF80
Purification	Purified by antigen affinity column.
Accession	Q14527
Stability and Storage	Use a manual defrost freezer and avoid repeated freeze thaw cycles. Store at 2 to 8°C for frequent use. Store at -20 to -80°C for twelve months from the date of receipt.

Note

For research use only.

Data Image



Western Blot

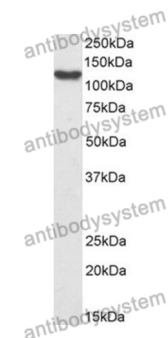
Recombinant Protein lysates were subjected to SDS PAGE followed by western blot with HLTF antibody (PHG81801) at 1 µg/ml.

Lane 1: Recombinant protein

Second Ab: Goat Anti-Rabbit IgG H&L Polyclonal antibody, HRP (PTB96431) at 0.1 µg/mL.

Predict MW: 20 kDa

Observed MW: 20 kDa



Western Blot

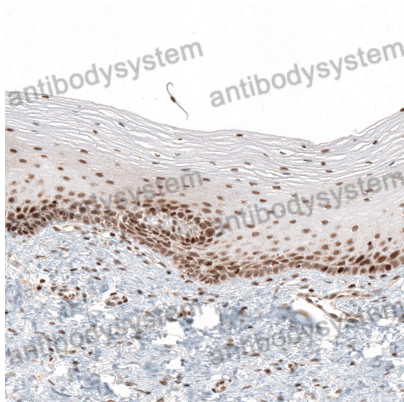
Various lysates were subjected to SDS PAGE followed by western blot with HLTF antibody (PHG81801) at 1 µg/ml.

Lane 1: Hela

Second Ab: Goat Anti-Rabbit IgG H&L Polyclonal antibody, HRP (PTB96431) at 0.1 µg/mL.

Predict MW: 114 kDa

Observed MW: 114 kDa



Immunohistochemical analysis of human cervix stained for HLTF with PHG81801.

Immunohistochemical