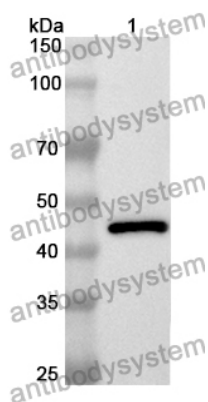


Anti-NCF1 Polyclonal Antibody

Summary

Catalog No.	PHD05201
Host species	Rabbit
Tested applications	ELISA: 1:4000-1:8000, IHC: 1:50-1:100, WB: 1:1000-1:4000
Species reactivity	Human, Mouse, Rat
Immunogen	E. coli - derived recombinant Human NCF1 (Met1-Val390).
Form	Liquid
Storage buffer	0.01M PBS, pH 7.4, 50% Glycerol, 0.05% Proclin 300.
Clonality	Polyclonal
Isotype	IgG
Applications	ELISA, IHC, WB
Target	SH3PXD1A, NCF1, p47-phox, 47 kDa autosomal chronic granulomatous disease protein, Nox-organizing protein 2, NOXO2, SH3 and PX domain-containing protein 1A, NCF-1, 47 kDa neutrophil oxidase factor, NCF-47K, Nox organizer 2, Neutrophil NADPH oxidase factor 1, Neutrophil cytosol factor 1
Purification	Purified by antigen affinity column.
Accession	P14598
Stability and Storage	Use a manual defrost freezer and avoid repeated freeze thaw cycles. Store at 2 to 8°C for frequent use. Store at -20 to -80°C for twelve months from the date of receipt.
Note	For research use only.

Data Image



Western Blot

Recombinant Protein lysates were subjected to SDS PAGE followed by western blot with NCF1 antibody (PHD05201) at 1 μ g/ml.

Lane 1: Recombinant protein

Second Ab: Goat Anti-Rabbit IgG H&L Polyclonal antibody, HRP (PTB96431) at 0.1 μ g/mL.

Predict MW: 47 kDa

Observed MW: 47 kDa