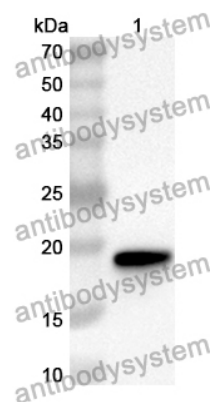


Anti-UBE2L3 Polyclonal Antibody

Summary

Catalog No.	PHF61801
Host species	Rabbit
Tested applications	ELISA: 1:4000-1:8000, IHC: 1:50-1:100, WB: 1:1000-1:4000
Species reactivity	Human, Mouse
Immunogen	E. coli - derived recombinant Human UBE2L3 (Ser4-Asp154).
Form	Liquid
Storage buffer	0.01M PBS, pH 7.4, 50% Glycerol, 0.05% Proclin 300.
Clonality	Polyclonal
Isotype	IgG
Applications	ELISA, IHC, WB
Target	UBE2L3, Ubiquitin-conjugating enzyme E2-F1, UBCH7, Ubiquitin-conjugating enzyme E2 L3, UBCE7, L-UBC, E2 ubiquitin-conjugating enzyme L3, UbcH7, Ubiquitin-protein ligase L3, Ubiquitin carrier protein L3
Purification	Purified by antigen affinity column.
Accession	P68036
Stability and Storage	Use a manual defrost freezer and avoid repeated freeze thaw cycles. Store at 2 to 8°C for frequent use. Store at -20 to -80°C for twelve months from the date of receipt.
Note	For research use only.

Data Image



Western Blot

Recombinant Protein lysates were subjected to SDS PAGE followed by western blot with UBE2L3 antibody (PHF61801) at 1 μ g/ml.

Lane 1: Recombinant protein

Second Ab: Goat Anti-Rabbit IgG H&L Polyclonal antibody, HRP (PTB96431) at 0.1 μ g/mL.

Predict MW: 20 kDa

Observed MW: 20 kDa