

Anti-AP1S2 Polyclonal Antibody

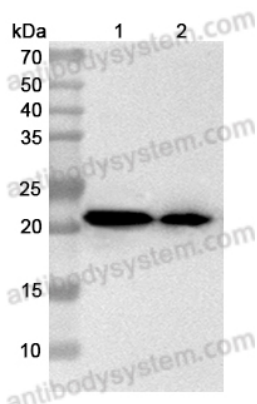
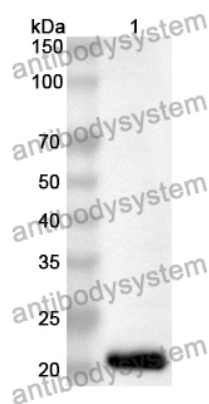
Summary

Catalog No.	PHF16701
Host species	Rabbit
Tested applications	ELISA: 1:4000-1:8000, IHC: 1:50-1:100, WB: 1:1000-1:4000
Species reactivity	Human, Mouse, Rat
Immunogen	E. coli - derived recombinant Human AP1S2 (Met1-Thr157).
Form	Liquid
Storage buffer	0.01M PBS, pH 7.4, 50% Glycerol, 0.05% Proclin 300.
Concentration	1.34 mg/ml
Clonality	Polyclonal
Isotype	IgG
Applications	ELISA, IHC, WB
Target	Sigma1B-adaptin, Sigma 1B subunit of AP-1 clathrin, AP1S2, Adaptor-related protein complex 1 subunit sigma-1B, Sigma-adaptin 1B, AP-1 complex subunit sigma-2, Clathrin assembly protein complex 1 sigma-1B small chain, Adaptor protein complex AP-1 subunit sigma-1B, Golgi adaptor HA1/AP1 adaptin sigma-1B subunit
Purification	Purified by antigen affinity column.
Accession	P56377
Stability and Storage	Use a manual defrost freezer and avoid repeated freeze thaw cycles. Store at 2 to 8°C for frequent use. Store at -20 to -80°C for twelve months from the date of receipt.

Note

For research use only.

Data Image

**WESTERN BLOT****Western Blot**

Various lysates were subjected to SDS PAGE followed by western blot with AP1S2 antibody (PHF16701) at 1 μ g/mL .

Lane 1: Raji cell lysate

Lane 2: Mouse brain lysate

Second Ab: Goat Anti-Rabbit IgG H&L Polyclonal antibody, HRP (PTB96431) at 0.1 μ g/mL.

Predict MW: 19 kDa

Observed MW: 20 kDa

Recombinant Protein lysates were subjected to SDS PAGE followed by western blot with AP1S2 antibody (PHF16701) at 1 μ g/ml.

Lane 1: Recombinant protein

Second Ab: Goat Anti-Rabbit IgG H&L Polyclonal antibody, HRP (PTB96431) at 0.1 μ g/mL.

Predict MW: 21 kDa

Observed MW: 21 kDa