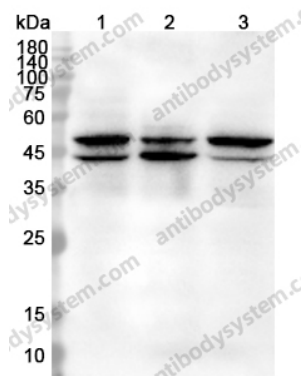


Anti-MPI Polyclonal Antibody

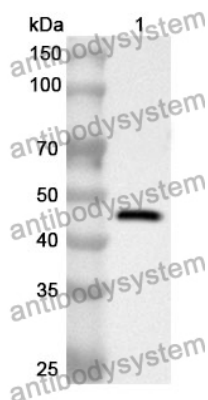
Summary

Catalog No.	PHE06001
Host species	Rabbit
Tested applications	ELISA: 1:4000-1:8000, IHC: 1:50-1:100, WB: 1:1000-1:4000
Species reactivity	Human, Mouse, Rat
Immunogen	E. coli - derived recombinant Human MPI (Ala2-Leu423).
Form	Liquid
Storage buffer	0.01M PBS, pH 7.4, 50% Glycerol, 0.05% Proclin 300.
Clonality	Polyclonal
Isotype	IgG
Applications	ELISA, IHC, WB
Target	Phosphohexomutase,PMI,Mannose-6-phosphate isomerase,Phosphomannose isomerase,MPI,PMI1
Purification	Purified by antigen affinity column.
Accession	P34949
Stability and Storage	Use a manual defrost freezer and avoid repeated freeze thaw cycles. Store at 2 to 8°C for frequent use. Store at -20 to -80°C for twelve months from the date of receipt.
Note	For research use only.

Data Image



Western blot



Western Blot

Various lysates were subjected to SDS PAGE followed by western blot with MPI antibody (PHE06001) at 1.79µg/ml.

Lane 1: HepG2 cell lysate

Lane 2: 293T cell lysate

Lane 3: Raji cell lysate

Second Ab: Goat Anti-Rabbit IgG H&L Polyclonal antibody, HRP (PTB96431) at 0.1 µg/mL.

Predict MW: 46,39 kDa

Observed MW: 50,43 kDa

Recombinant Protein lysates were subjected to SDS PAGE followed by western blot with MPI antibody (PHE06001) at 1 µg/ml.

Lane 1: Recombinant Protein

Second Ab: Goat Anti-Rabbit IgG H&L Polyclonal antibody, HRP (PTB96431) at 0.1 µg/mL.

Predict MW: 49 kDa

Observed MW: 49 kDa