

Anti-HSPA1L Polyclonal Antibody

Summary

Catalog No.	PHE05701
Host species	Rabbit
Tested applications	ELISA: 1:4000-1:8000, IHC: 1:50-1:100, WB: 1:1000-1:4000
Species reactivity	Human, Mouse, Rat
Immunogen	E. coli - derived recombinant Human HSPA1L (Met1-Asp641).
Form	Liquid
Storage buffer	0.01M PBS, pH 7.4, 50% Glycerol, 0.05% Proclin 300.
Clonality	Polyclonal
Isotype	IgG
Applications	ELISA, IHC, WB
Target	HSP70-Hom,Heat shock 70 kDa protein 1L,Heat shock 70 kDa protein 1-like,HSPA1L,Heat shock 70 kDa protein 1-Hom
Purification	Purified by antigen affinity column.
Accession	P34931
Stability and Storage	Use a manual defrost freezer and avoid repeated freeze thaw cycles. Store at 2 to 8°C for frequent use. Store at -20 to -80°C for twelve months from the date of receipt.
Note	For research use only.

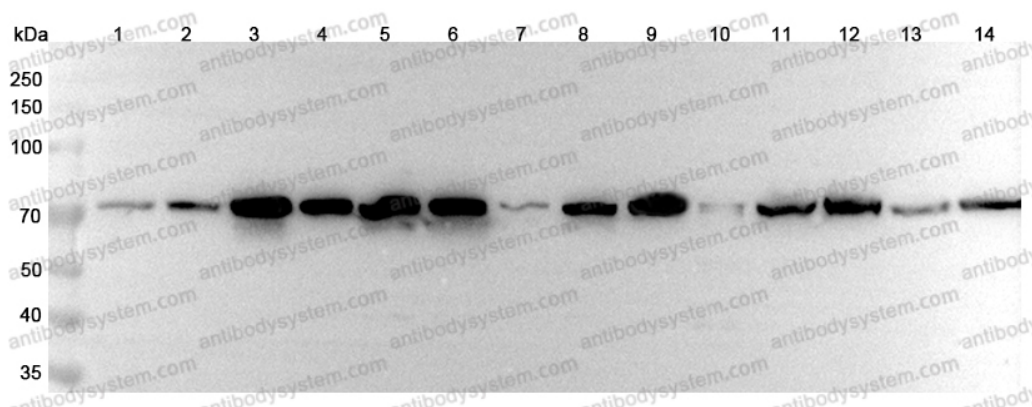
Data Image

Various lysates were subjected to SDS PAGE followed by western blot with HSPA1L antibody (PHE05701) at 1µg/ml.

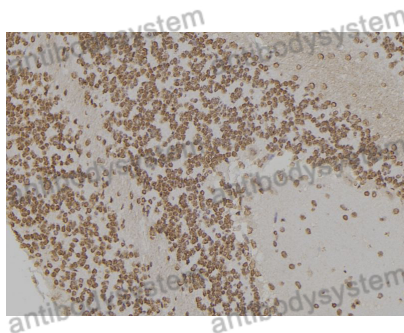
Lane 1: PC12 cell lysate
Lane 2: HepG2 cell lysate
Lane 3: Human plasma lysate
Lane 4: Mouse spleen lysate
Lane 5: Mouse liver lysate
Lane 6: Mouse kidney lysate
Lane 7: Mouse lung lysate
Lane 8: Rat spleen lysate
Lane 9: Rat liver lysate
Lane 10: Rat kidney lysate
Lane 11: Rat lung lysate

Second Ab: Goat Anti-Rabbit IgG H&L Polyclonal antibody, HRP (PTB96431) at 0.1 µg/mL.

Predict MW: 70 kDa
Observed MW: 70 kDa

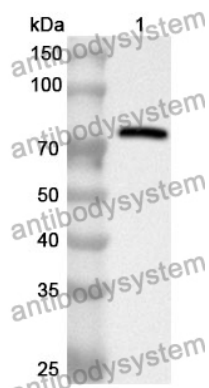


Western Blot



Immunohistochemical

Immunohistochemical analysis of rat brain stained for HSPA1L with PHE05701.



Western Blot

Recombinant Protein lysates were subjected to SDS PAGE followed by western blot with HSPA1L antibody (PHE05701) at 1 μ g/ml.

Lane 1: Recombinant Protein

Second Ab: Goat Anti-Rabbit IgG H&L Polyclonal antibody, HRP (PTB96431) at 0.1 μ g/mL.

Predict MW: 73 kDa
Observed MW: 73 kDa