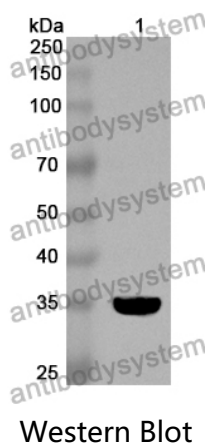


Anti-CA8 Polyclonal Antibody

Summary

Catalog No.	PHE07401
Host species	Rabbit
Tested applications	ELISA: 1:4000-1:8000, IHC: 1:50-1:100, WB: 1:1000-1:4000
Species reactivity	Human, Mouse, Rat
Immunogen	E. coli - derived recombinant Human CA8 (Met1-Gln290).
Form	Liquid
Storage buffer	0.01M PBS, pH 7.4, 50% Glycerol, 0.05% Proclin 300.
Clonality	Polyclonal
Isotype	IgG
Applications	ELISA, IHC, WB
Target	Carbonic anhydrase VIII, CA-VIII, Carbonic anhydrase-related protein, CA8, CARP, CALS
Purification	Purified by antigen affinity column.
Accession	P35219
Stability and Storage	Use a manual defrost freezer and avoid repeated freeze thaw cycles. Store at 2 to 8°C for frequent use. Store at -20 to -80°C for twelve months from the date of receipt.
Note	For research use only.

Data Image



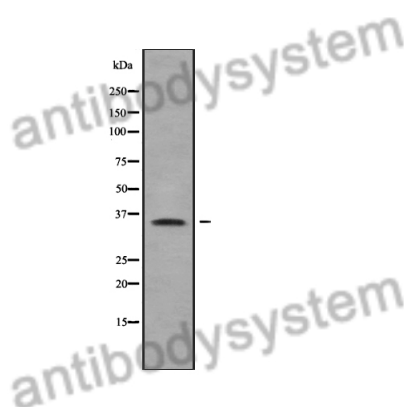
Recombinant Protein lysates were subjected to SDS PAGE followed by western blot with CA8 antibody (PHE07401) at 1 µg/ml.

Lane 1: Recombinant protein

Second Ab: Goat Anti-Rabbit IgG H&L Polyclonal antibody, HRP (PTB96431) at 0.1 µg/mL.

Predict MW: 35 kDa

Observed MW: 35 kDa



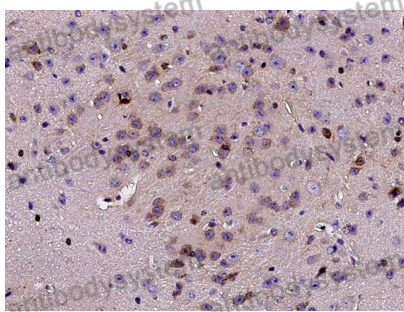
Various lysates were subjected to SDS PAGE followed by western blot with CA8 antibody (PHE07401) at 1 µg/ml.

Lane 1: K562

Second Ab: Goat Anti-Rabbit IgG H&L Polyclonal antibody, HRP (PTB96431) at 0.1 µg/mL.

Predict MW: 33 kDa

Observed MW: 33 kDa



Immunohistochemical

Immunohistochemical analysis of mouse brain stained for CA8 with PHE07401.