

# Anti-AP2S1 Polyclonal Antibody

## Summary

---

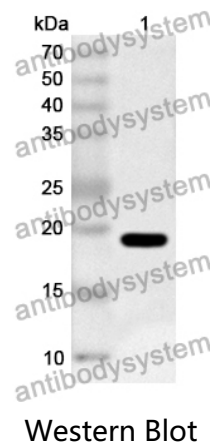
<b>Catalog No.</b>	PHE99901
<b>Host species</b>	Rabbit
<b>Tested applications</b>	ELISA: 1:4000-1:8000, IHC: 1:50-1:100, WB: 1:1000-1:4000
<b>Species reactivity</b>	Human, Mouse, Rat
<b>Immunogen</b>	E. coli - derived recombinant Human AP2S1 (Met1-Glu142).
<b>Form</b>	Liquid
<b>Storage buffer</b>	0.01M PBS, pH 7.4, 50% Glycerol, 0.05% Proclin 300.
<b>Clonality</b>	Polyclonal
<b>Isotype</b>	IgG
<b>Applications</b>	ELISA, IHC, WB
<b>Target</b>	Adaptor-related protein complex 2 subunit sigma, Clathrin assembly protein 2 sigma small chain, HA2 17 kDa subunit, AP2S1, Clathrin coat-associated protein AP17, Clathrin coat assembly protein AP17, AP-2 complex subunit sigma, Adaptor protein complex AP-2 subunit sigma, CLAPS2, AP17, Sigma2-adaptin, Plasma membrane adaptor AP-2 17 kDa protein
<b>Purification</b>	Purified by antigen affinity column.
<b>Accession</b>	P53680
<b>Stability and Storage</b>	Use a manual defrost freezer and avoid repeated freeze thaw cycles. Store at 2 to 8°C for frequent use. Store at -20 to -80°C for twelve months from the date of receipt.

**Note**

For research use only.

## Data Image

---



Recombinant Protein lysates were subjected to SDS PAGE followed by western blot with AP2S1 antibody (PHE99901) at 1 µg/ml.

Lane 1: Recombinant protein

Second Ab: Goat Anti-Rabbit IgG H&L Polyclonal antibody, HRP (PTB96431) at 0.1 µg/mL.

Predict MW: 19 kDa

Observed MW: 19 kDa