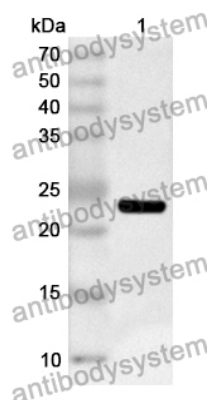


Anti-EZH1 Polyclonal Antibody

Summary

Catalog No.	PHJ96901
Host species	Rabbit
Tested applications	ELISA: 1:4000-1:8000, IHC: 1:50-1:100, WB: 1:1000-1:4000
Species reactivity	Human, Mouse, Rat
Immunogen	E. coli - derived recombinant Human EZH1 (Pro559-Leu747).
Form	Liquid
Storage buffer	0.01M PBS, pH 7.4, 50% Glycerol, 0.05% Proclin 300.
Clonality	Polyclonal
Isotype	IgG
Applications	ELISA, IHC, WB
Target	Histone-lysine N-methyltransferase EZH1, ENX-2, Enhancer of zeste homolog 1, KIAA0388, EZH1
Purification	Purified by antigen affinity column.
Accession	Q92800
Stability and Storage	Use a manual defrost freezer and avoid repeated freeze thaw cycles. Store at 2 to 8°C for frequent use. Store at -20 to -80°C for twelve months from the date of receipt.
Note	For research use only.

Data Image



Western Blot

Recombinant Protein lysates were subjected to SDS PAGE followed by western blot with EZH1 antibody (PHJ96901) at 1 µg/ml.

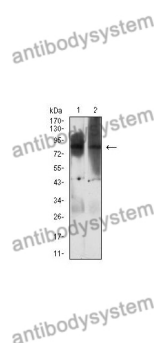
Lane 1: Recombinant protein

Second Ab: Goat Anti-Rabbit IgG H&L Polyclonal antibody, HRP (PTB96431) at 0.1 µg/mL.

Predict MW: 24 kDa

Observed MW: 24 kDa

Various lysates were subjected to SDS PAGE followed by western blot with EZH1 antibody (PHJ96901) at 1 µg/ml.



Western Blot

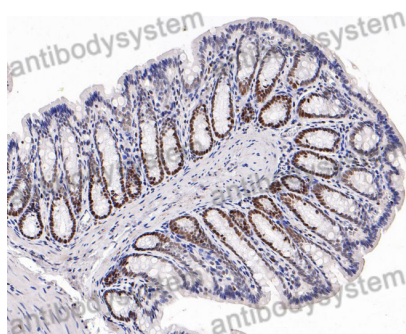
Lane 1: HepG2

Lane 2: Hela

Second Ab: Goat Anti-Rabbit IgG H&L Polyclonal antibody, HRP (PTB96431) at 0.1 µg/mL.

Predict MW: 86 kDa

Observed MW: 86 kDa



Immunohistochemical

Immunohistochemical analysis of rat large intestine stained for EZH1 with PHJ96901.